

## ASSEMBLY INSTRUCTIONS

ITEM# / SKU# / Color: 2922-8886B-48 / 810672079 /

ITEM# / SKU# / Color: 2922-8434-48 / 810673253 /

---

## FABRIC | CHAIR

---

Need help? We are here for you!  
[www.biglots.com/help/contact-us](http://www.biglots.com/help/contact-us)

---

# GENERAL BEST PRACTICES FOR ASSEMBLY:

---

Read all instructions before starting

Clear a flat covered space to being

Always best to do it with a friend

Note that hardware required is provided for every step

Pay attention to orientation

Letter of the part corresponds to a sticker on the product

Number of the hardware corresponds to its letter in the package

Helpful hints provided along the way

---

## WARNINGS:

---

Cushions tend to shift in the box and become compressed during shipping; or under normal use, some cushion designs may compress more easily. If cushions appear to be compressed, wavy, or wrinkled, they can easily be “fluffed” by hand. Loose cushions can be removed and patted firmly by hand on all sides and edges until the appearance is improved. Fixed cushions can also be patted firmly by hand until appearance improves. After initial unboxing, allow 24-48 hours for cushions to fully rebound to their normal shape.

Do not allow children to play on or near this product.

---

## MAINTENANCE:

---

**Regularly check hardware and tighten if necessary**

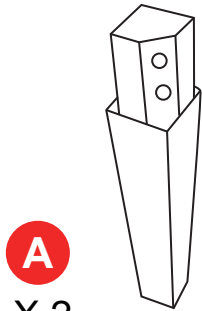
### **Cleaning Instructions:**

1. Do not stand on the seat cushion.
2. For indoor use only.
3. Do not expose to direct sunlight.
4. Do not place this product near sources of excessive heat.
5. Avoid use of sharp objects on or near this product.
6. Use fabric/upholstery cleaner on spills and marks, as general household cleaners can damage fibres and discolour fabrics.
7. Clean spills/marks immediately, as stains are harder to remove when they are left unattended.
8. For persistent stains and overall cleaning, contact a professional upholstery cleaning company.

---

## PARTS LIST

---



**A**

X 2

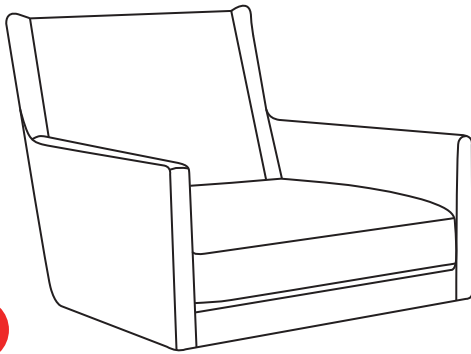
Front wood legs



**B**

X 2

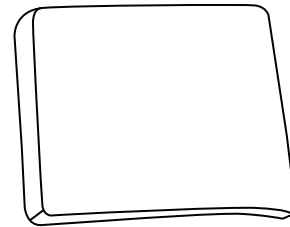
Back wood legs



**C**

X1

Chair



**D**

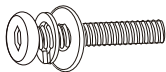
X1

Back cushion

---

## HARDWARE LIST

---



**1**

X8

5/16" x 2 1/4" L bolts with washers



**2**

X1

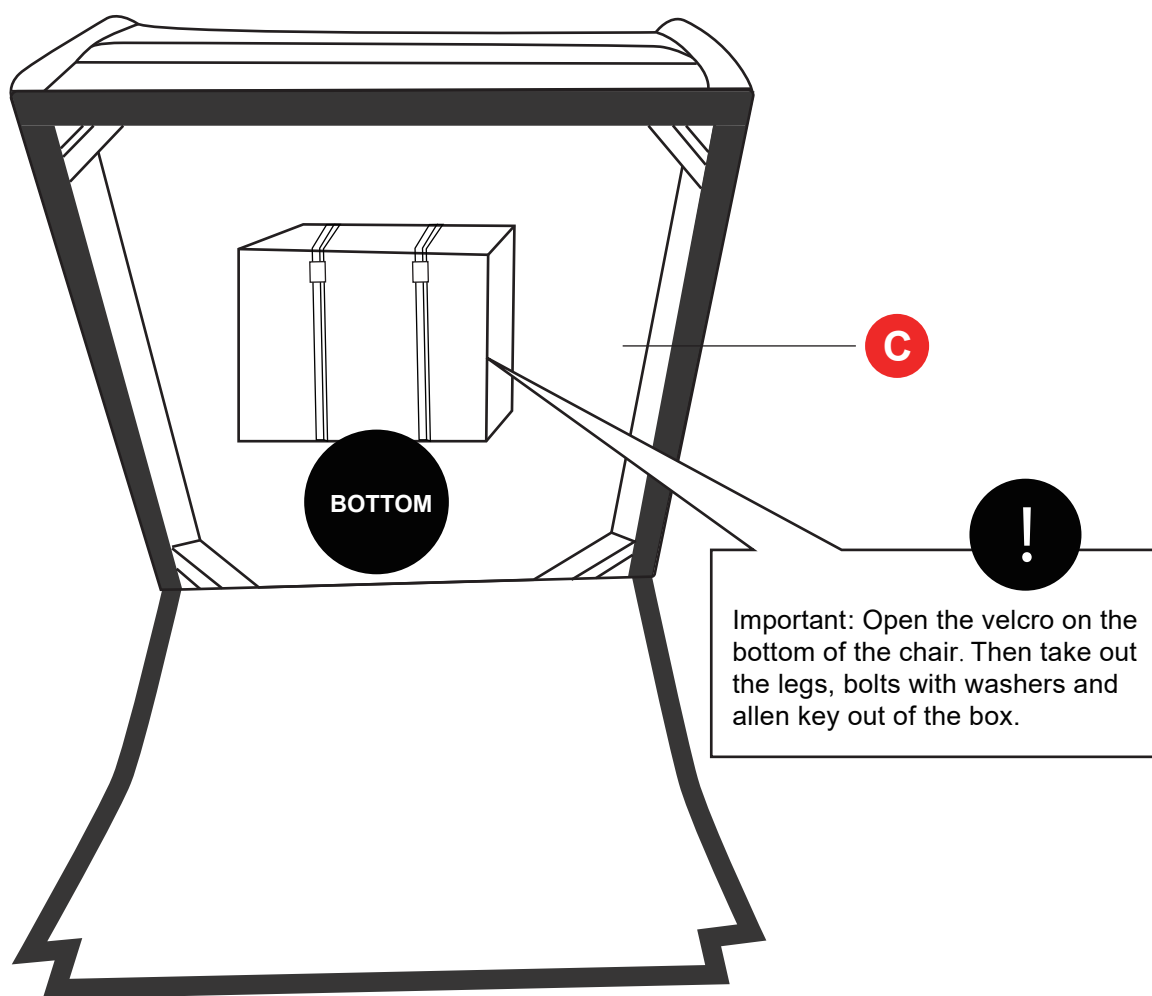
3" x 1 1/4" L allen key

---

## HELPFUL HINTS

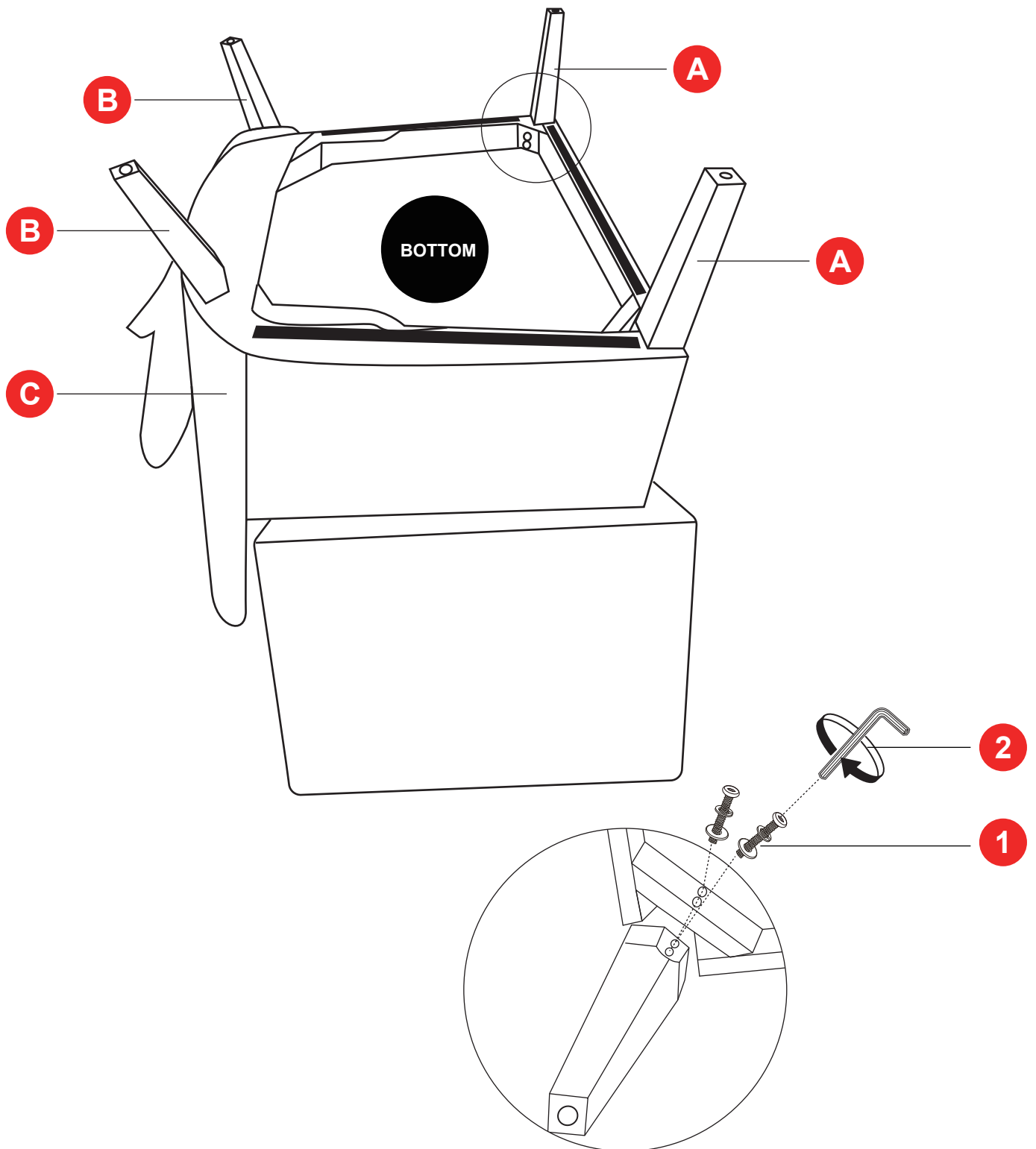
---

- Separating parts before starting



# STEP 1

Remove all parts from the carton and separate them into part number groups as indicated in the parts list. Attach legs (A & B) to the bottom of the chair (C) by using 5/16" x 2 1/4" L bolts with washers (1) and tighten using 3" x 1 1/4" L allen key (2).

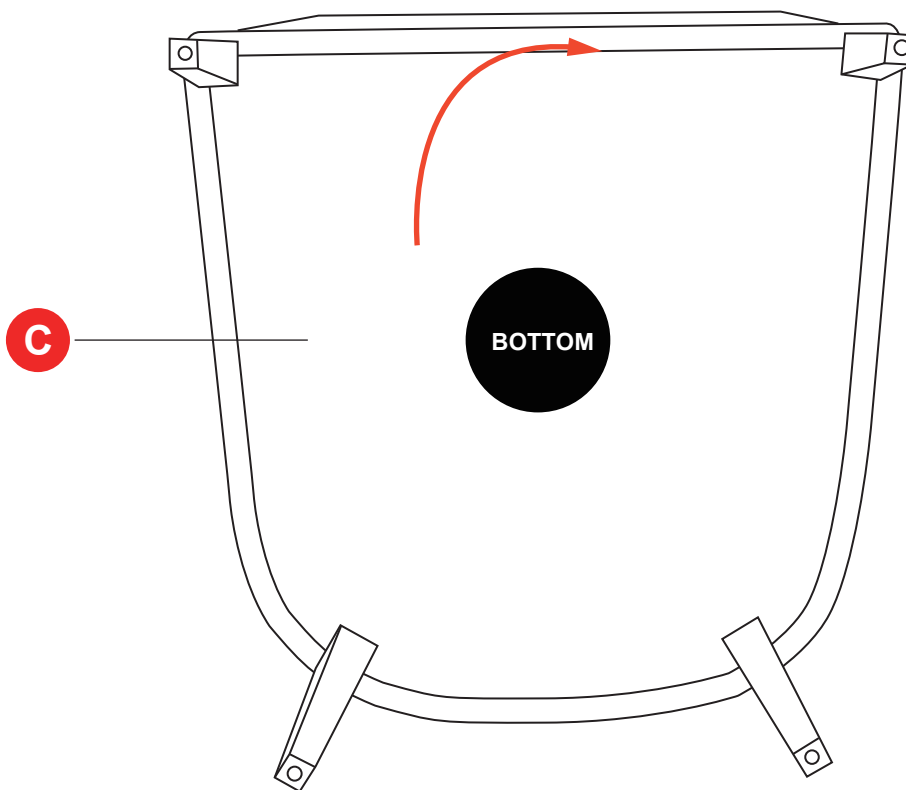


---

## STEP 2

---

After the assembly is complete, please stick the velcro.

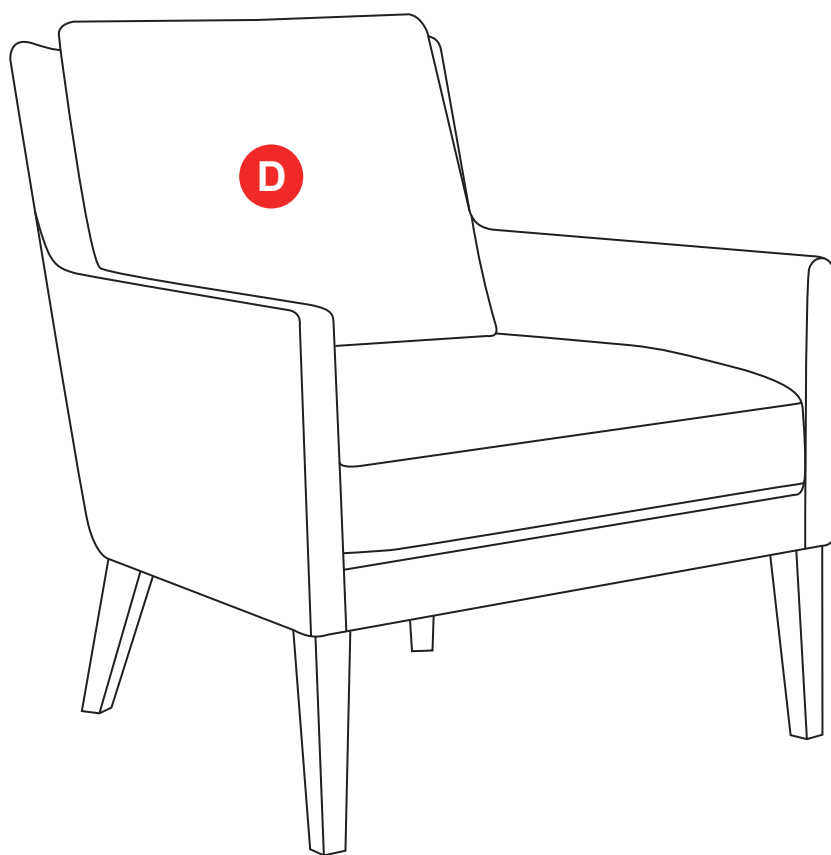


---

## STEP 3

---

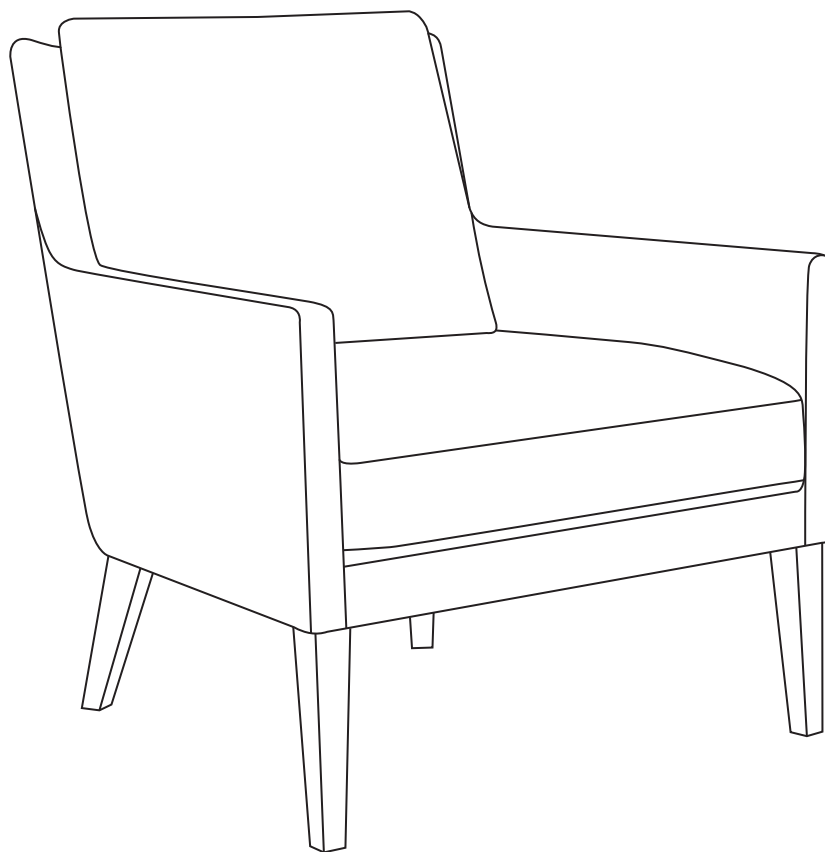
Put the back cushion (D) on the chair.



---

## ASSEMBLED VIEW

---



PRINTED IN VIETNAM