

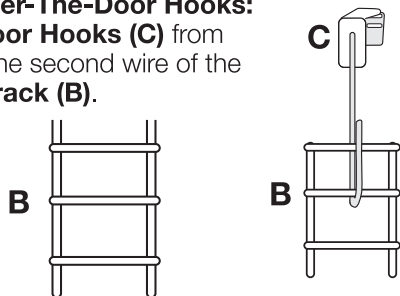
Assembly Instructions for Deluxe Household Organizer 8255 Series

SMART DESIGN® Questions? Comments? Write to: info@promartinc.com
PRO-MART Industries, Inc.
17421 Von Karman Avenue
Irvine, CA 92614-6205 U.S.A.
Designed in U.S.A. Made in China
www.promartinc.com
© COPYRIGHT MMXVIII PRO-MART INDUSTRIES, INC.

Toll-free: 1-866-776-6278

THIS PACKAGE CONTAINS	
LTR. QTY	
A 2	Connector
B 4	Mounting Track
C 2	Over The Door Hook
D 5	Basket
E 8	Plastic Clip
F 8	Screws
G 4	Adhesive Strips

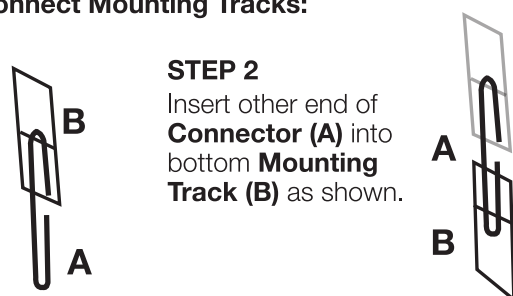
1 How to Attach Over-The-Door Hooks:
Insert **Over The Door Hooks (C)** from behind and under the second wire of the top of **Mounting Track (B)**.



2 How to Connect Mounting Tracks:

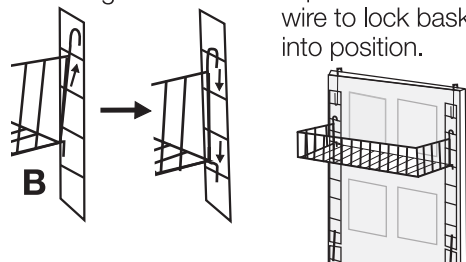
STEP 1
Insert one end of **Connector (A)** into top **Mounting Track (B)** as shown.

STEP 2
Insert other end of **Connector (A)** into bottom **Mounting Track (B)** as shown.

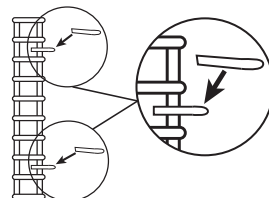


3 STEP 1
Position **Basket (D)** onto **Mounting Track (B)** at desired height.

STEP 2
Slide down, making sure bottom of bracket is placed behind lower wire to lock basket into position.

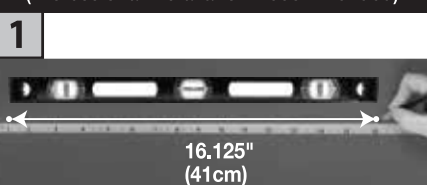


Optional NOTE: Before sticking the post to the door, make sure the posts are straight vertically and baskets are set properly.



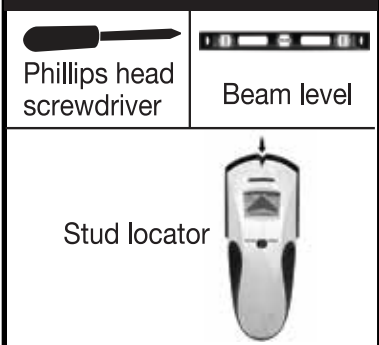
- Make sure the unit is centered and level.
- Stick **Adhesive Strips (G)** on the inside of each **Mounting Track** near the top and the bottom.

Wall Mount Option
(Professional Installation Recommended)

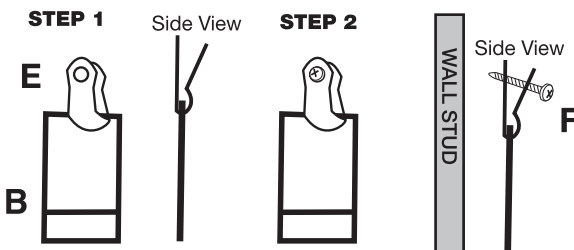


Use a Stud locator tool to find where the studs are. Measure and mark the wall 16.125" (41cm) wide making sure the 2 marks are level.

TOOLS NEEDED



2 How to Mount to Wall with Plastic Clips:
Slide **Plastic Clip (E)** around the first wire of the **Mounting Track (B)**. Insert **Screw (F)** through holes in the **Plastic Clip (E)** and securely mount to wall studs.



NOTE: Screws must mount to wall studs only.

Unit can be separated into two sections



ATTENTION

PLEASE CALL BEFORE RETURNING TO STORE

Call Pro-Mart Industries Customer Service Department for Replacement parts and/or assembly questions

Toll Free in USA: 1-866-776-6278

Between 8 a.m. and 5 p.m. (PST) Monday-Friday or email from anywhere: info@promartinc.com

Please include contact name, phone number, product manufacturing number (Mfg# located above the UPC Code), description of issue and best time to contact

17421 Von Karman Ave • Irvine, CA 92614

Visit our web site to find more great home organizing items
www.promartinc.com

V# 181009-R9

- 1) Please only send an actual production sample that has been run thru a printing press. Sample should be cut and scored.
- 2) Make sure the sample meets all of our requirements.
- 3) We check for things like size, color registration, spot color, label or box finish, paper quality.
- 4) Make sure all of these things are correct when sending us a sample. Any artwork that is moved into production without approval is subjected to 100% of production cost at printer's expense.
- 5) This artwork must be printed on bright white surface.

- 1) 所有彩卡或彩盒必须打版，不接受彩稿。样品要求已经完成模切和压叠痕。
- 2) 所有样版必须达到我司要求的指标。
- 3) 我们审核按照尺寸，颜色配准，专色 (Spot color)，彩卡/盒的表面，纸张质量等。
- 4) 请各司先核对及符合以上指标后在寄出样版。任何未经确认就大货生产的彩盒生产商必须承担100%责任。
- 5) 图稿必须打印在亮白色表面。

“Spot Color”一定要用单一颜色，四色印刷不会被接受



17421 Von Karman Ave.
Irvine, CA 92614-6205

CONTACT 949.428.7700
Guillermo.Ayala@promartinc.com

PRODUCTION

Job/PO#: _____
Product #: 8255112
Description: Deluxe Household Organizer
assembly instructions
Revision#: 9 Date: 10/09/2018
Approval Initial Date
President: / /
Artist: Guillermo / /
other / /

PRINTING INKS

4/COLOR PROCESS
SPOT COLORS
C (CYAN)
M (MAGENTA)
Y (YELLOW)
K (BLACK)

NON PRINTING INKS

DIELINE (WILL NOT PRINT)

PAPER FINISH

☐ GLOSSY 光纸
☐ WATER PRINT 水印刷品
☒ MATTE 表面无光泽的纸

BOX PACKAGING

NO tape adhesives may be used on closure. Glue only may be used.

所有彩卡/盒不能用胶布黏贴及封口，一定要用热熔胶

CONFIDENTIALITY NOTICE: This file, and any attachments there to, is intended only for use by the addressee(s) named herein and may contain confidential information. If you are not the intended recipient of this file, you are hereby notified that any dissemination, distribution or copying of this file, and any attachments thereto, is strictly prohibited. If you have received this file in error, please contact Pro-Mart Industries, Inc. at 949.428.7700. Thank you for your compliance. © COPYRIGHT MMXVI PRO-MART INDUSTRIES, INC.