

These instructions are for your safety. Please read through them thoroughly before use and retain for future reference.

Safety Reminder:

- This is not a toy. It's a decoration only.
- To protect against electric shock, never immerse any appliances, the main lead plug in water or any other liquid. Also ensure hands are dry before operating and connecting/disconnecting the power source.
- Always position cables and extension leads so that they will not be a hazard to the elderly, children and pets.
- **Do not** overload power sockets or extension leads.
- **If you are in any doubt about installing this product, consult a qualified electrician.**

Warning:

1. This product comes semi-assembled. Remove the light set from the packaging. Take care not to damage or twist the cable.
2. Ensure that the cables are fully unwound before use. Avoid any damage to the wire insulation.
3. Do not connect product to the power supply while it's in the packaging.
4. Do not connect this product electrically to another chain.
5. Do not carry the product by the cord or pull the cord to remove the plug or transformer from the socket. If part of product or cable is damaged, the set must be destroyed.
6. Always unplug from the main power supply when not in use, overnight or if unattended.
7. Do not place this set where it may become covered by other items such as curtains, nets or bedding.
8. Replace failed bulbs immediately by the same rated voltage and wattage provided with this light set to prevent overheating.

Use Instructions:

1. This product is suitable for indoor use only.
2. Remove the light set from the packaging, take care not to damage or twist the wires.
3. Ensure that the cables are fully unwound before use.
4. Check the set before use for loose or damaged wiring and that all the bulbs are secure. If you are in doubt, do not use the set.
5. This product operates with an indoor DC transformer supplied with the set.
6. Use only with the DC transformer supplied which confirms to safety requirement of UL standard.
7. Plug the product into the DC transformer supplied with the set.
8. Plug the DC transformer into the main socket outlet.
9. This product is parallel wired in 5 sections of 10 bulbs with each individual section being wired in series. Therefore, if a bulb is pulled out, that series of bulbs will fail to light.

Bulb replacement instructions:

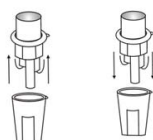
This light set has push-in / pull-out type replaceable bulbs. Please read and follow these instructions when changing a bulb.

To remove a bulb please open the button of lampholder first, grip plastic collar at the base of the bulb between your thumb and forefinger, and pull out the failed bulb with the collar, taking care not to crush the bulb. See figure 1.

To replace a bulb, ensure the bulb contacts are in the correct place and the bulb makes a good connection.

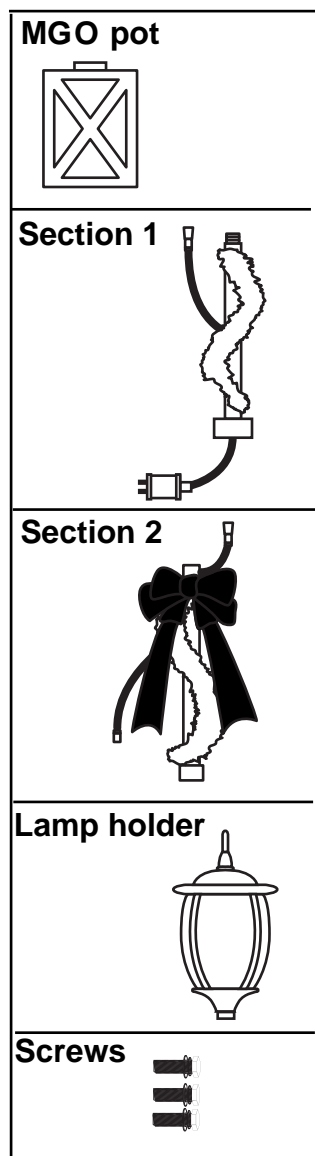
- To avoid the risk of overheating a failed bulb must be replaced immediately with a bulb of the same rated voltage and wattage.
- Always disconnect the light set from the power supply before removing any bulb.
- This set is constructed in series. Therefore if a bulb is missing, loose or twisted incorrectly in the base, the lights in that circuit may not light. In this event, you must test all bulbs in that circuit to find out the missing, loose or twisted incorrectly bulb and replace / insert it well.

Figure 1

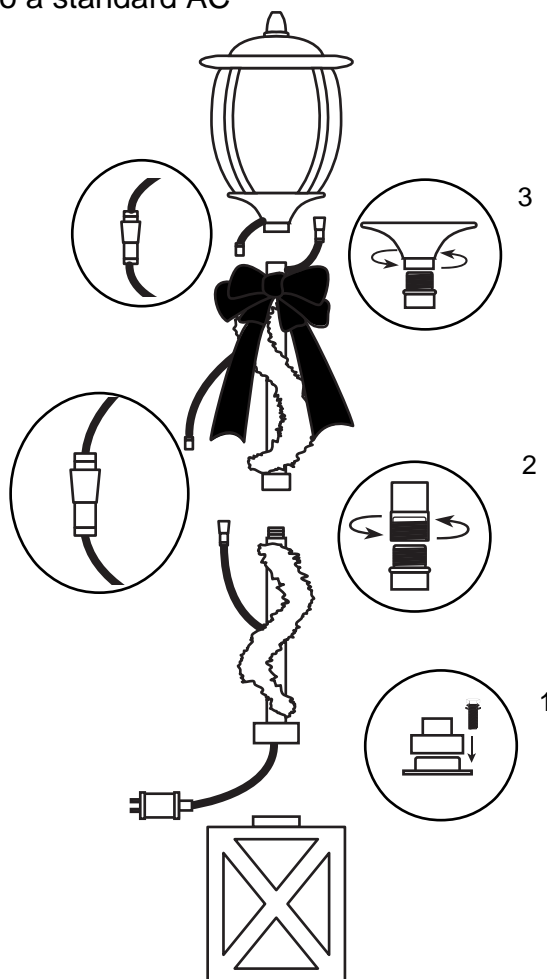


ASSEMBLY INSTRUCTIONS:

1. Unpack the package to find all the 5 parts:



2. Place the section 1 onto the MGO pot, and fix it tightly with 3 screws.
3. Screw the section 2 onto the section 1, plug in end-to-end connection.
4. Screw the lamp holder onto the section 2, plug in the end-to-end connection.
5. Plug in the adapter to a standard AC outlet for decoration.



Trouble shooting:

If the set fails to light, please check the following:

- Disconnect the set from the main power supply.
- Check the transformer for loose wires.
- Check that the remaining bulbs are correctly positioned in the lamp holders.
- Check the remaining bulbs to ensure that they are not faulty or broken.

Specification:

Low voltage light set

Item No.: LPG-70F5LW05

Tye ref.: 50 lights set 1pcs spare bulbs included

Bulb rating: 50pcs x 3.0V, 20mA

DC Transformer model: TS-3W28V

Rated input voltage: 120V~60Hz, 0.08A

Rated output voltage: 28V $\underline{\quad\quad}$ 0.107A

Product to transformer: 1.8m

For indoor use only.

CUSTOMER SERVICE:

If none of the above steps corrects your problem, please contact the Customer Service Department at Puleo International, Inc. following the steps as below:

FOR CUSTOMER SERVICE CALL: 1-800-311-3324

Business Hours: Monday - Friday - 9:30 am - 4:00 pm EST

This instruction sheet should be retained as it contains important information.

Made in China

