

## **ASSEMBLY INSTRUCTIONS**

ITEM#: 2879-61844P-23 / 2879-61844P-76

SKU# 810620621 / 810620623

---

# **RECLINING | SECTIONAL**

---

**Need help? We are here for you!**  
**[www.biglots.com/help/contact-us](http://www.biglots.com/help/contact-us)**

---

# GENERAL BEST PRACTICES FOR ASSEMBLY:

---

Read all instructions before starting

Clear a flat covered space to being

Always best to do it with a friend

Note that hardware required is provided for every step

Pay attention to orientation

Letter of the part corresponds to a sticker on the product

Number of the hardware corresponds to its letter in the package

Helpful hints provided along the way

---

## WARNINGS:

---

CAUTION: Changes or modifications not expressly approved by the party responsible for compliance could void the user's authority to operate the equipment.

CAN ICES-3(B) / NMB-3(B)

Note: This equipment has been tested and found to comply with the limits for a Class B digital device, pursuant to part 15 of the FCC Rules and ICC. These limits are designed to provide reasonable protection against harmful interference in a residential installation. This equipment generates, uses and can radiate radio frequency energy and, if not installed and used in accordance with the instructions, may cause harmful interference to radio communications. However, there is no guarantee that interference will not occur in a particular installation. If this equipment does cause harmful interference to radio or television reception, which can be determined by turning the equipment off and on, the user is encouraged to try to correct the interference by one or more of the following measures:

- Reorient or relocate the receiving antenna.
- Increase the separation between the equipment and receiver.
- Connect the equipment into an outlet on a circuit different from that to which the receiver is connected.
- Consult the dealer or an experienced radio/TV technician for help.

Do not allow children to play on or near this product.

---

## MAINTENANCE:

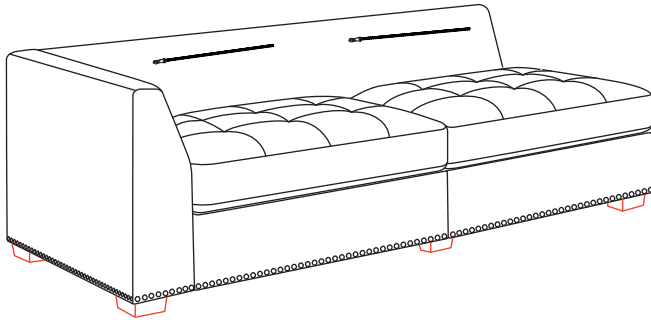
---

**Regularly check hardware and tighten if necessary**

### Cleaning Instructions:

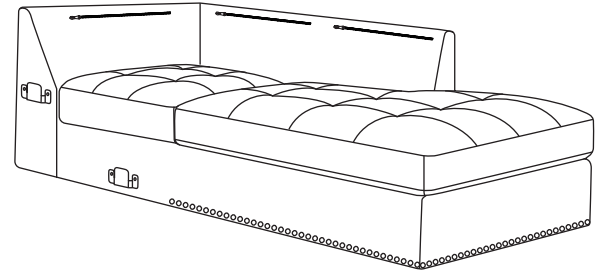
1. Do not stand on the seat cushion.
2. For indoor use only.
3. Do not expose to direct sunlight.
4. Do not place this product near sources of excessive heat.
5. Avoid use of sharp objects on or near this product.
6. Use fabric/upholstery cleaner on spills and marks, as general household cleaners can damage fibres and discolour fabrics.
7. Clean spills/marks immediately, as stains are harder to remove when they are left unattended.
8. For persistent stains and overall cleaning, contact a professional upholstery cleaning company.

# PARTS LIST



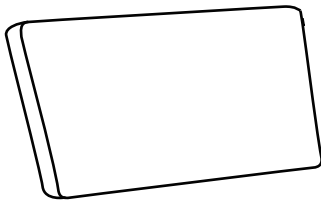
**A**

X1  
recliner power loveseat  
(The legs of the recliner  
power loveseat have been  
assembled)



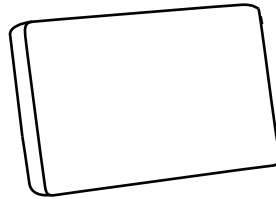
**B**

X1  
chaise



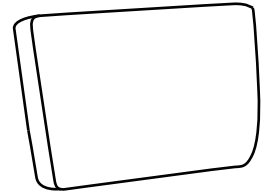
**C**

X1  
Back cushion



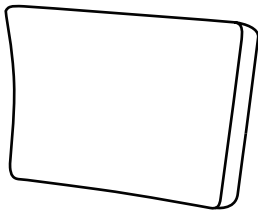
**D**

X1  
Back cushion



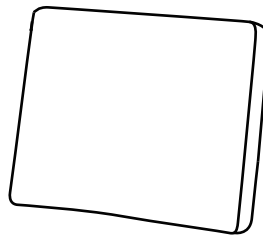
**E**

X1  
Back cushion



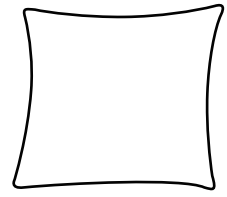
**F**

X1  
Back cushion



**G**

X1  
Back cushion



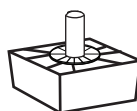
**H**

X4  
Pillows



**I**

X1  
Power cord



**J**

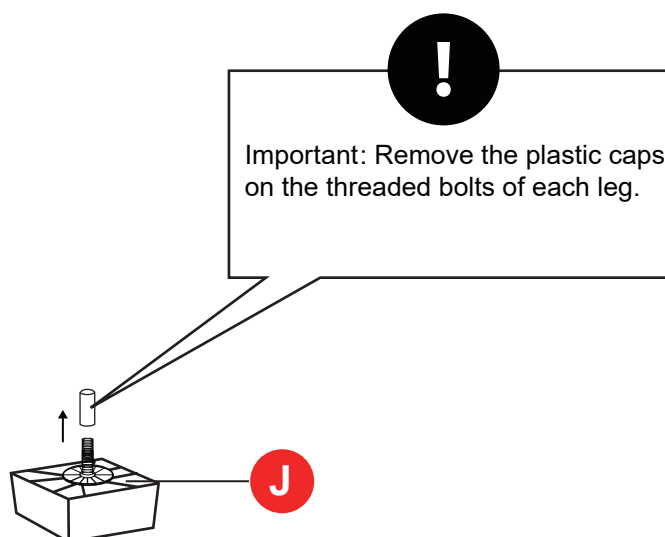
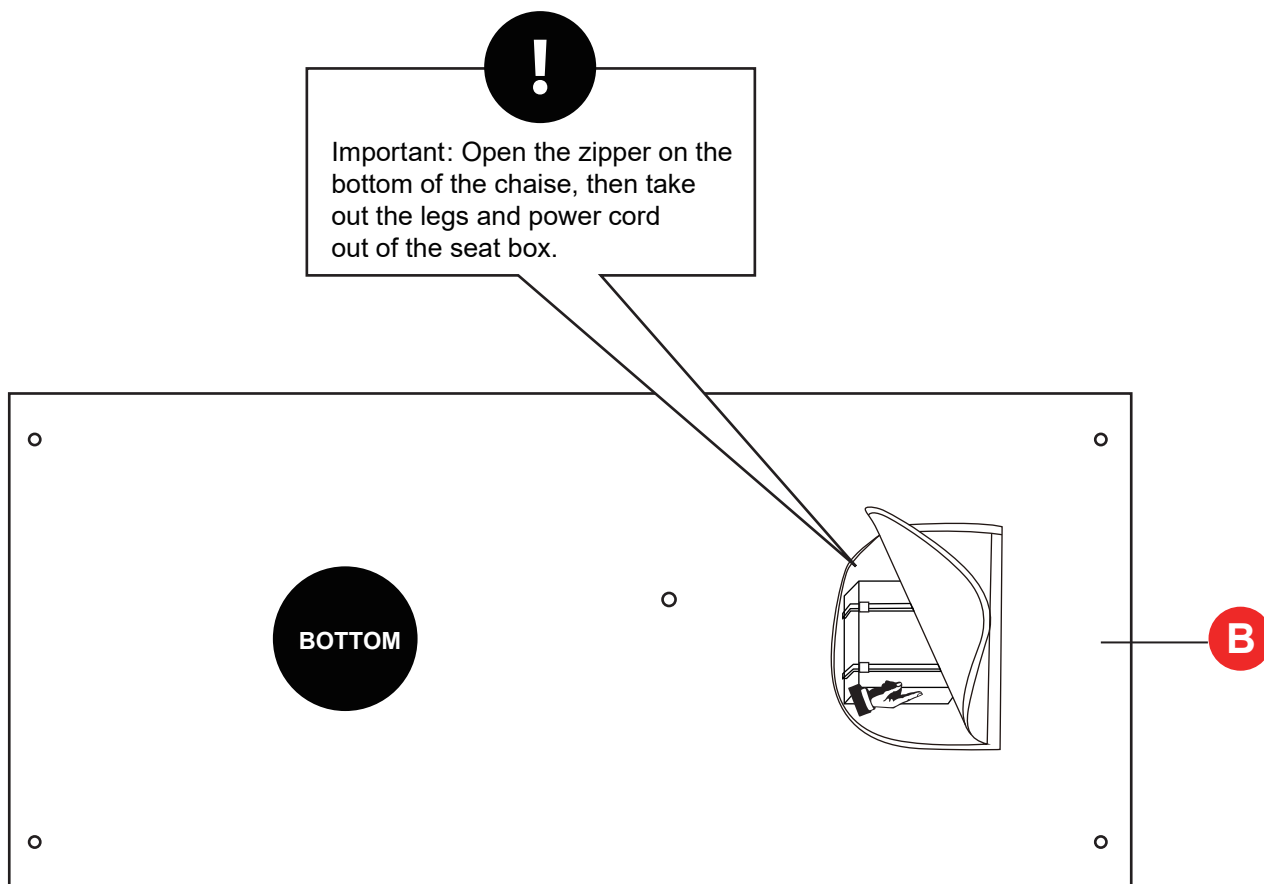
X10  
Plastic legs with washers  
(including the five legs of  
the recliner power loveseat)

---

# HELPFUL HINTS

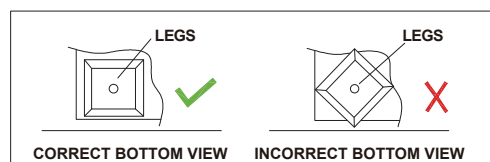
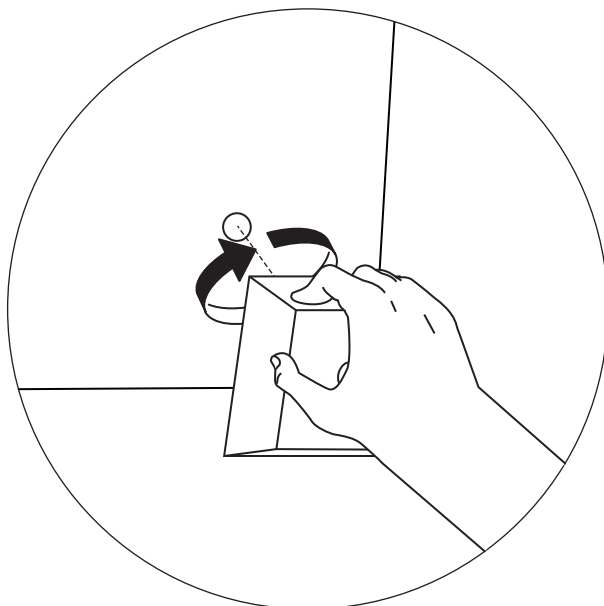
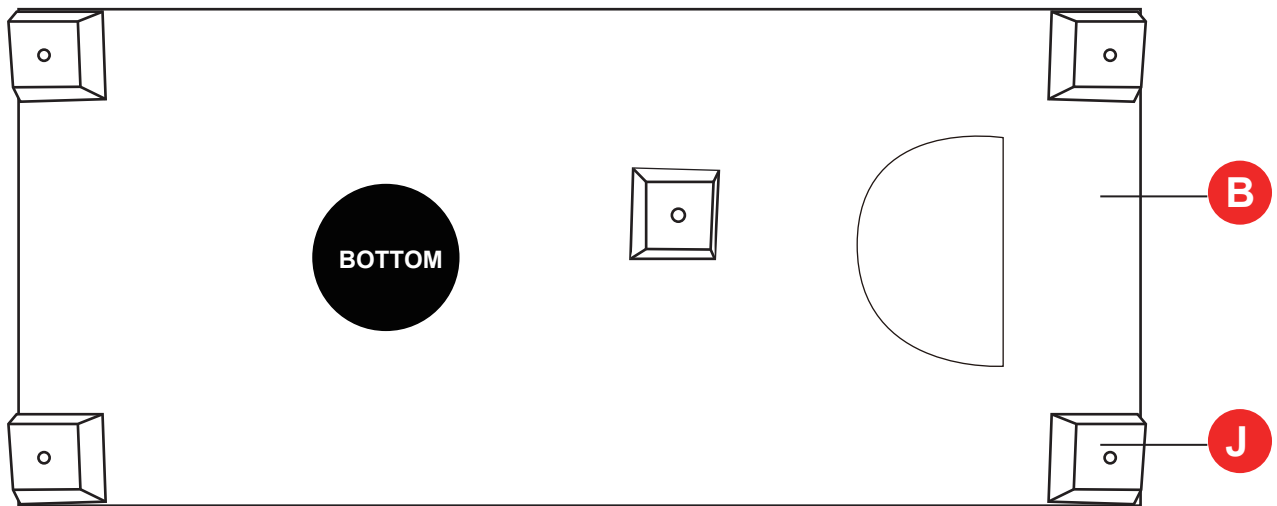
---

- Separating parts before starting



# STEP 1

Attach plastic legs with washers (J) to the bottom of the chaise (B) as shown. Close the zipper.  
(Warning: The legs of the recliner power loveseat (A) have been assembled).

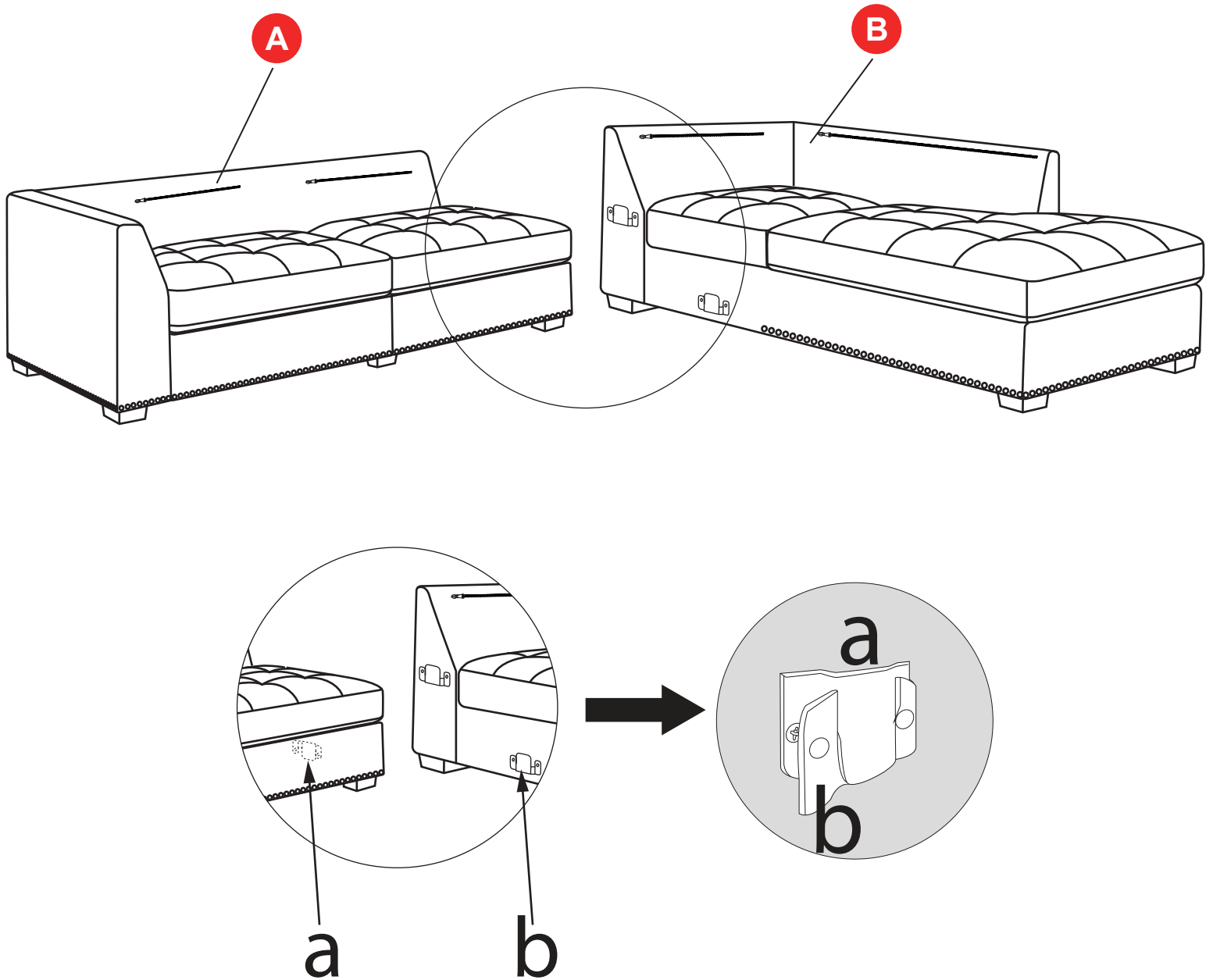


---

## STEP 2

---

There is a connection between recliner power loveseat (A) and chaise (B). Lift the recliner power loveseat (A) on the open end where hooks are located and let the downward facing hooks (a) slide into the upward facing hook slots (b) located on the chaise (B) as shown.

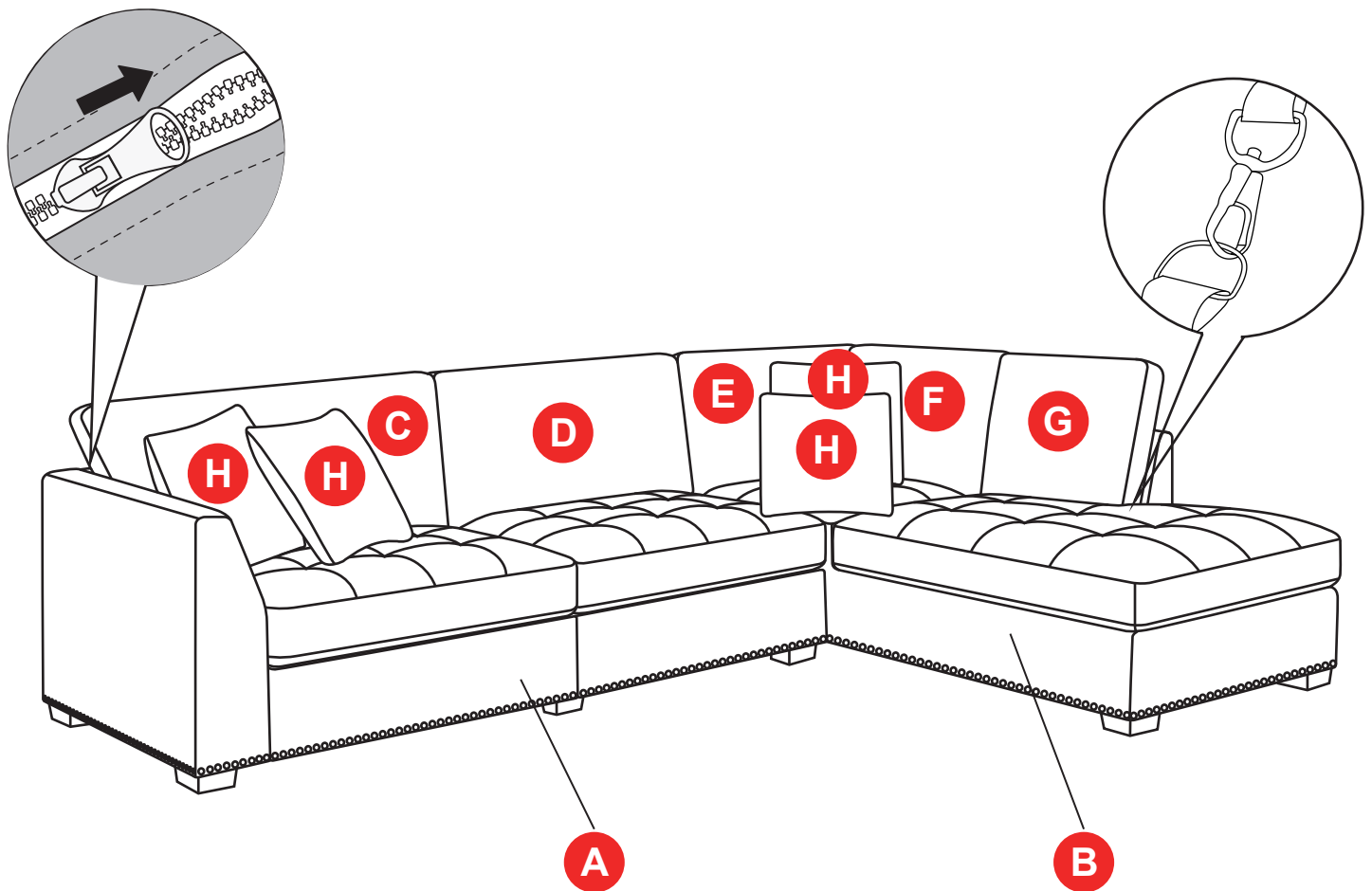


---

## STEP 3

---

Attach the back cushions (C & D & E & F & G) to the back frame by zipper and clasps at the bottom of the back cushions, put pillows (H) on the recliner power loveseat (A) and chaise (B) as shown.



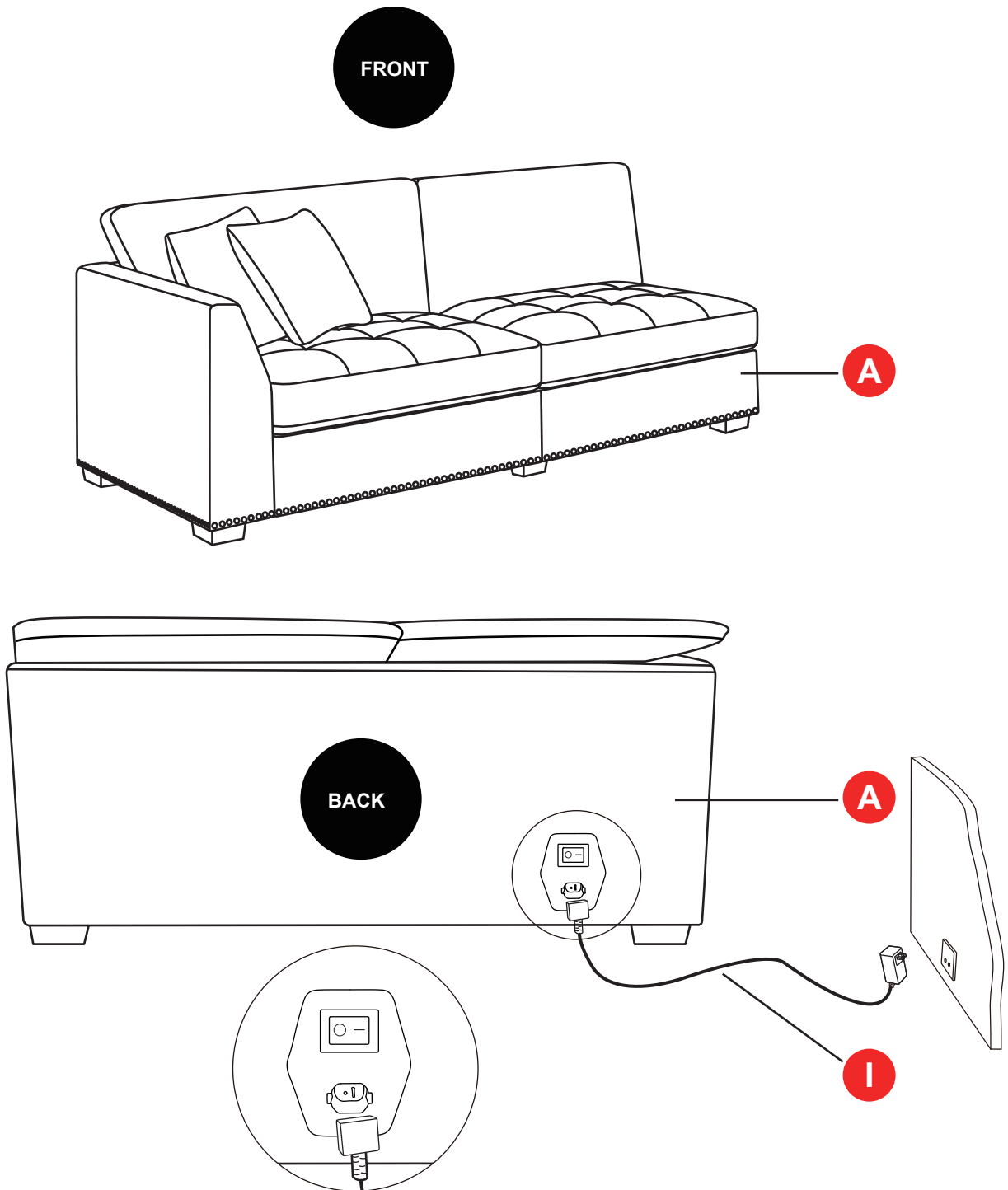
---

# OPERATING INSTRUCTIONS

---

One end of the power cord (I) is connected to the recliner power loveseat (A), and the other end is connected to the socket-outlet (100V-240V). When the power switch is pressed to the “—”, it means it is on (power indicator light up), and when it is pressed to the “O”, it means it is off (power indicator is off).

NOTE: The socket-outlet should be installed near the equipment and shall be easily accessible.

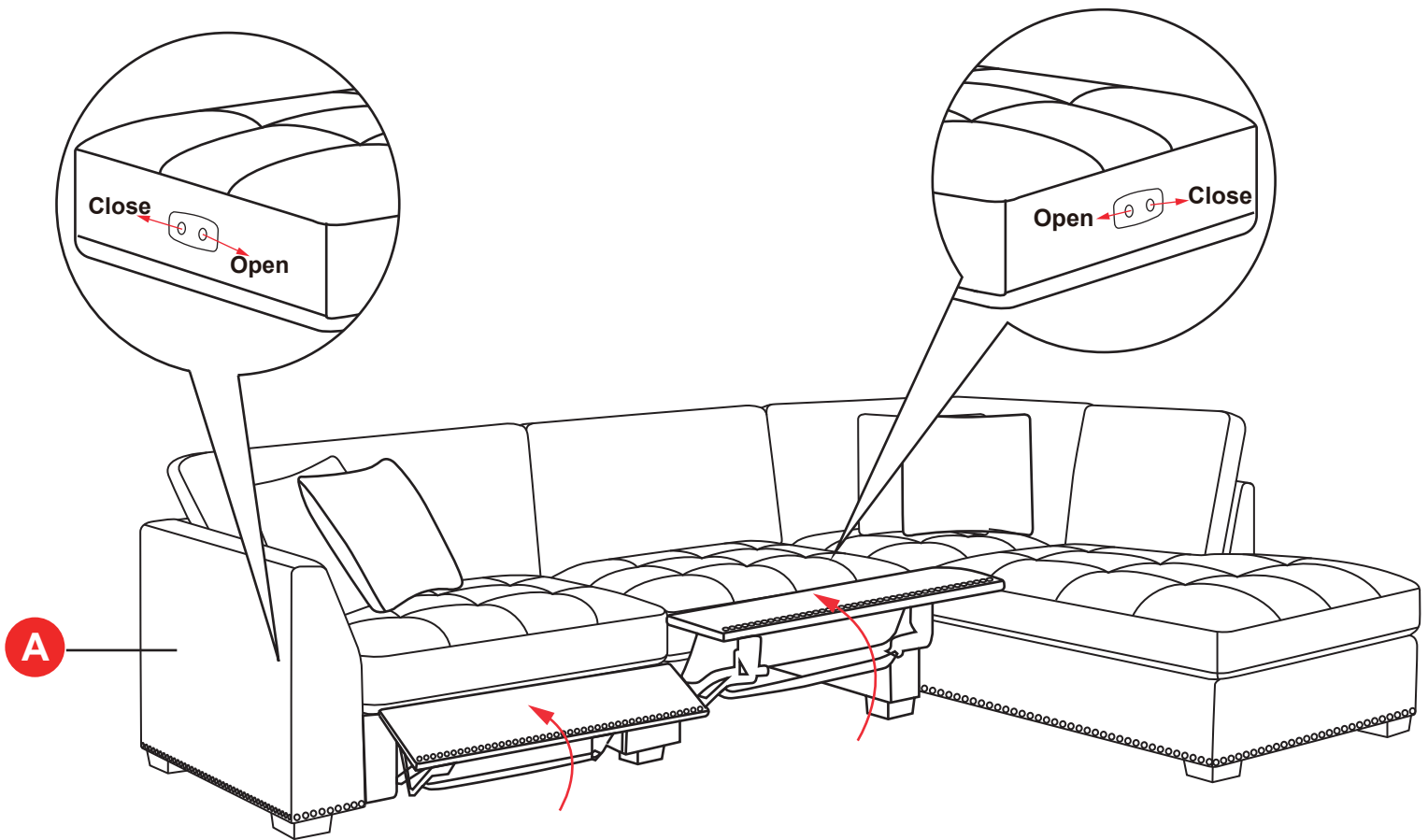


---

# OPERATING INSTRUCTIONS

---

While seated, to make the footrest recline, press the “open” control button on the side of seat cushion. To return the footrest to your desired position, press the “close” control button.

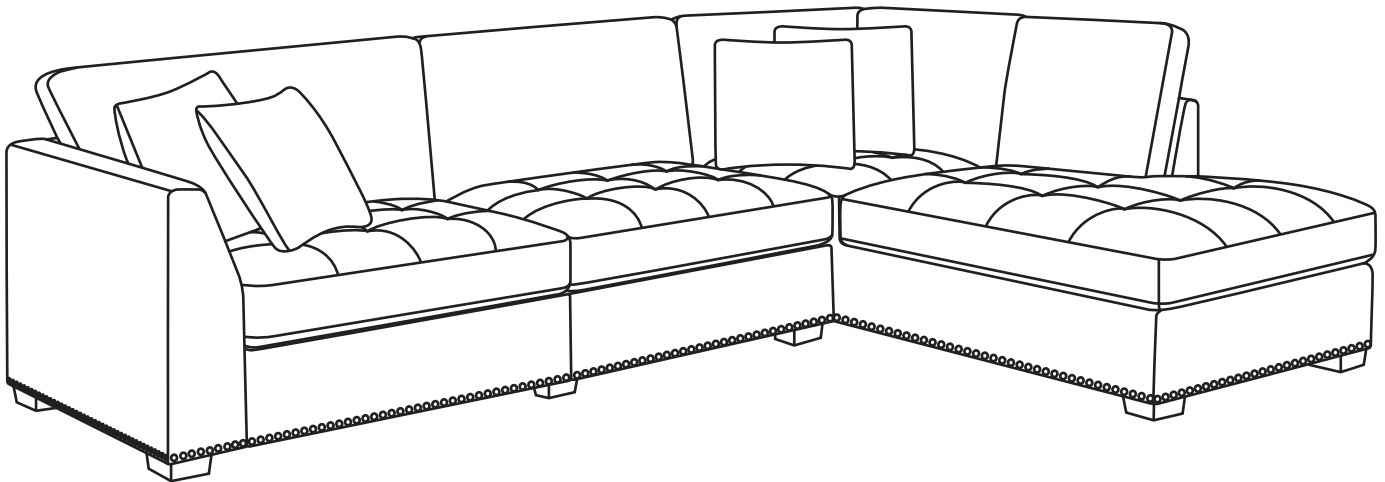


---

## ASSEMBLED VIEW

---

The sectional is now ready for use.



PRINTED IN VIETNAM