

ASSEMBLY INSTRUCTIONS

ITEM#: 2880-61754P-36

SKU# 810620575

SLEEPER | SOFA

Need help? We are here for you!
www.biglots.com/help/contact-us

GENERAL BEST PRACTICES FOR ASSEMBLY:

Read all instructions before starting

Clear a flat covered space to being

Always best to do it with a friend

Note that hardware required is provided for every step

Pay attention to orientation

Letter of the part corresponds to a sticker on the product

Number of the hardware corresponds to its letter in the package

Helpful hints provided along the way

WARNINGS:

Cushions tend to shift in the box and become compressed during shipping; or under normal use, some cushion designs may compress more easily. If cushions appear to be compressed, wavy, or wrinkled, they can easily be “fluffed” by hand. Loose cushions can be removed and patted firmly by hand on all sides and edges until the appearance is improved. Fixed cushions can also be patted firmly by hand until appearance improves. After initial unboxing, allow 24-48 hours for cushions to fully rebound to their normal shape.

Do not allow children to play on or near this product.

MAINTENANCE:

Regularly check hardware and tighten if necessary

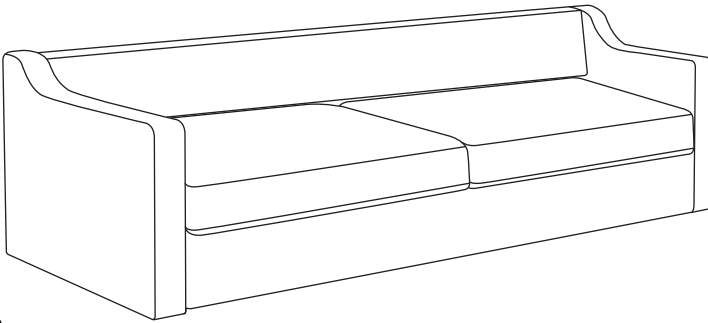
Cleaning Instructions:

1. Do not stand on the seat cushion.
2. For indoor use only.
3. Do not expose to direct sunlight.
4. Do not place this product near sources of excessive heat.
5. Avoid use of sharp objects on or near this product.
6. Use fabric/upholstery cleaner on spills and marks, as general household cleaners can damage fibres and discolour fabrics.
7. Clean spills/marks immediately, as stains are harder to remove when they are left unattended.
8. For persistent stains and overall cleaning, contact a professional upholstery cleaning company.

PARTS LIST

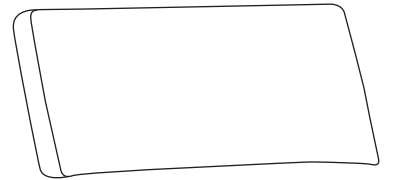
A

X1
Sofa



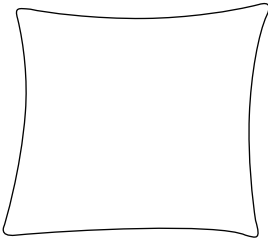
B

X2
Back cushions



C

X4
Pillows



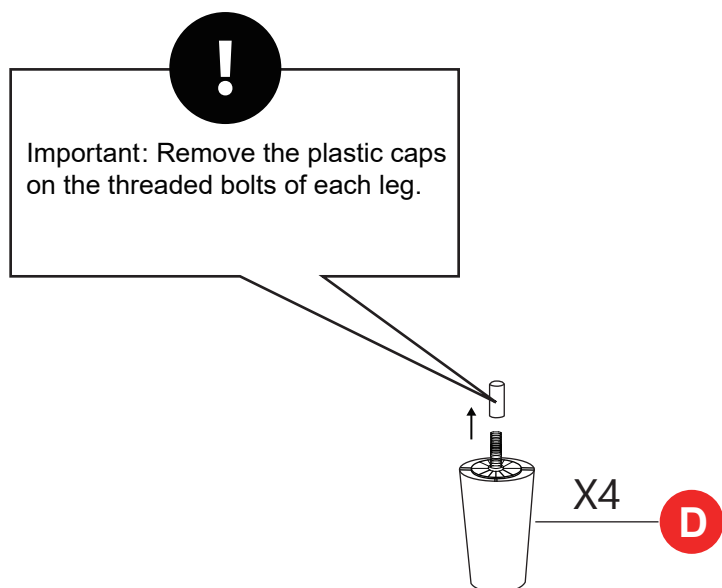
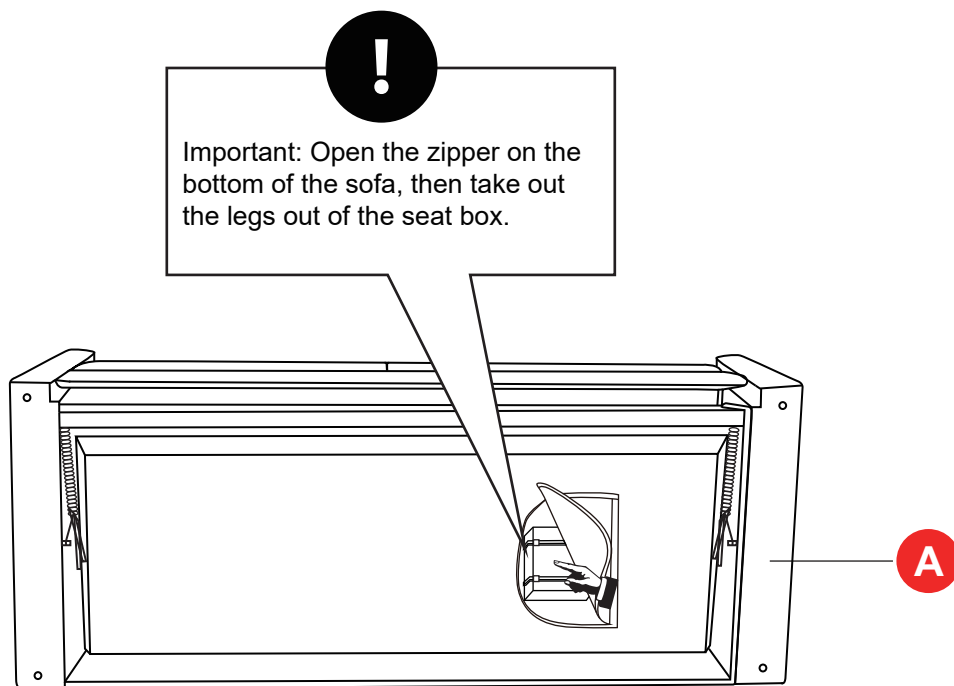
D

X4
Plastic legs with washers



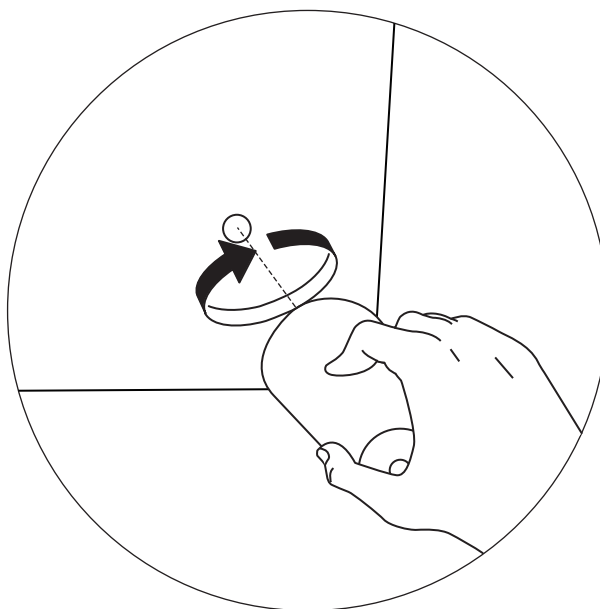
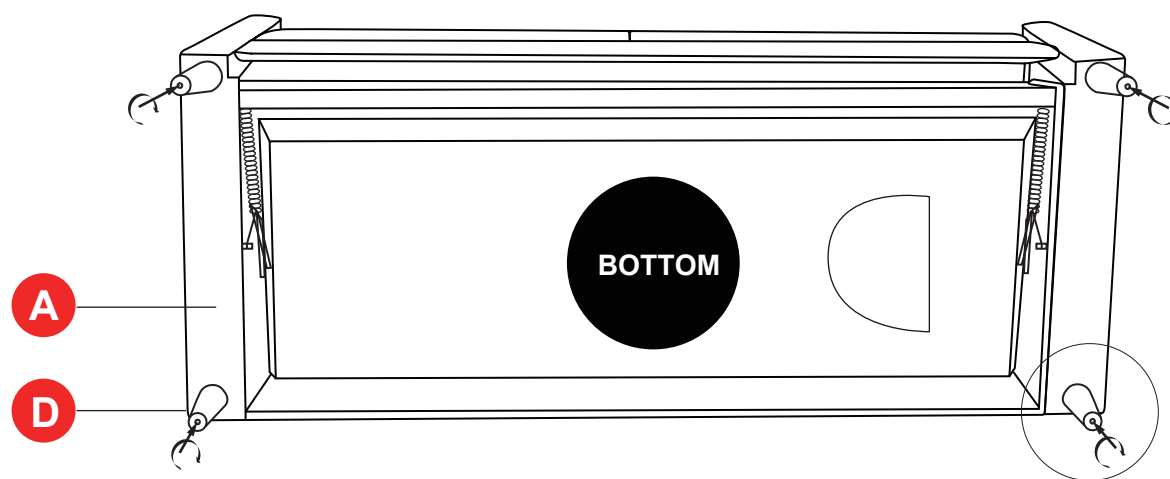
HELPFUL HINTS

- Separating parts before starting



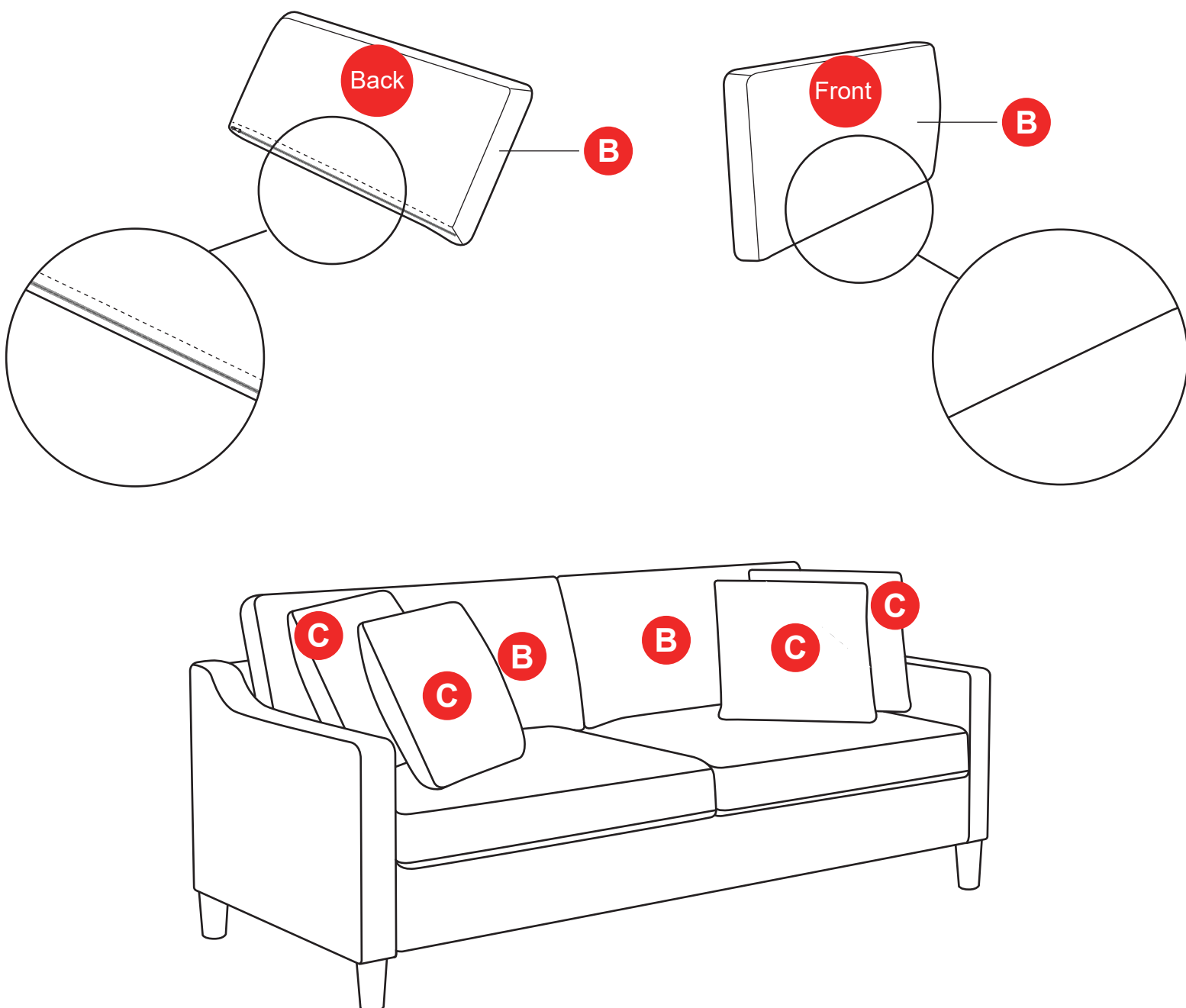
STEP 1

Attach plastic legs with washers (D) to the bottom of the sofa (A) as shown. Close the zipper.

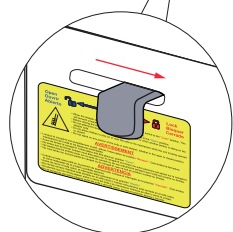
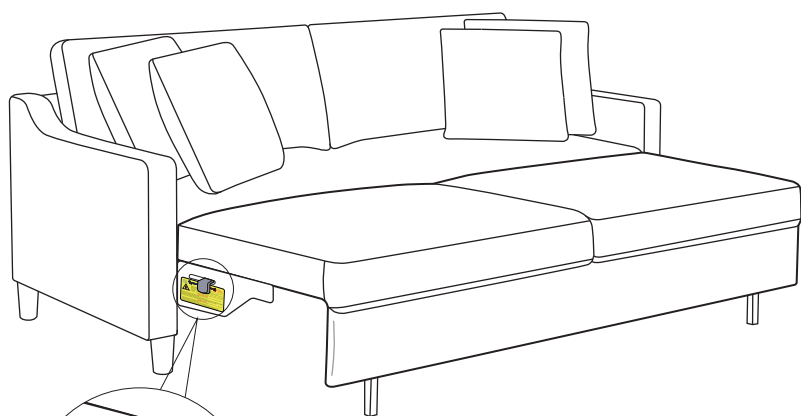
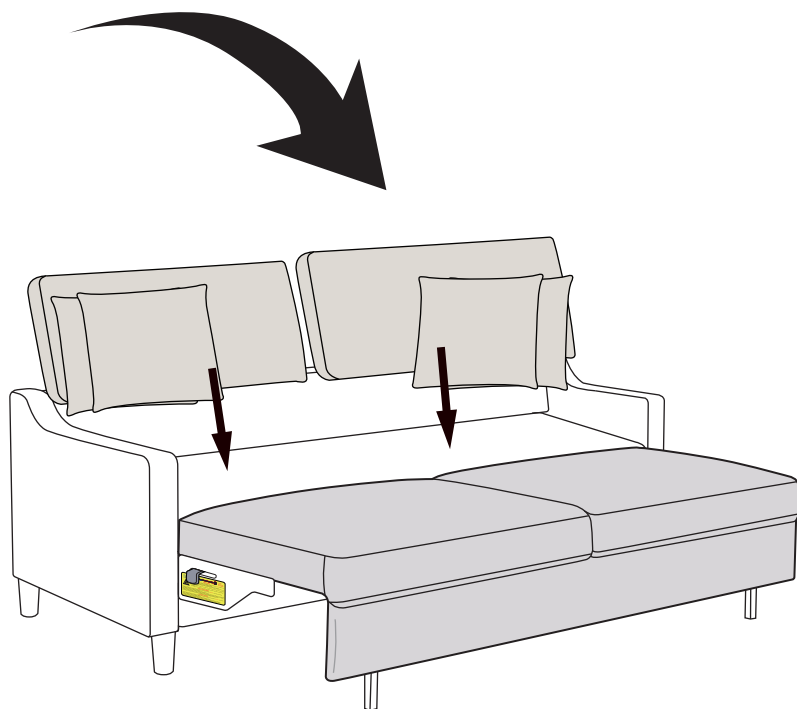
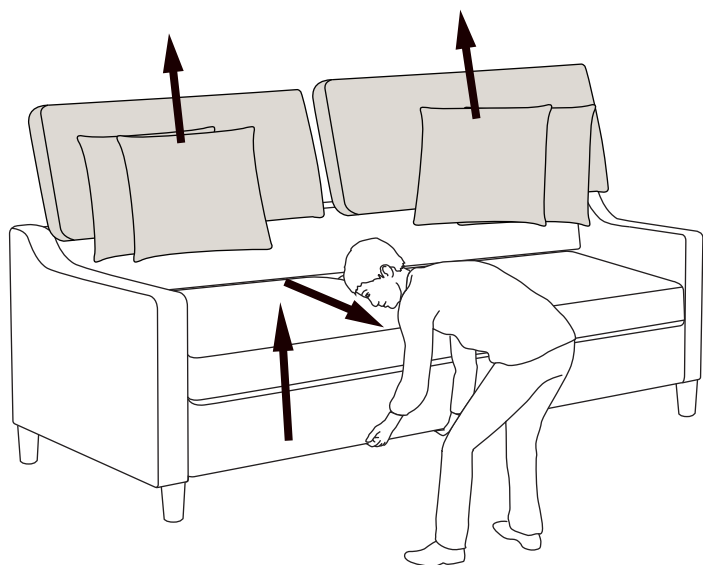


STEP 2

Put the back cushions (B) and pillows (C) on the sofa.

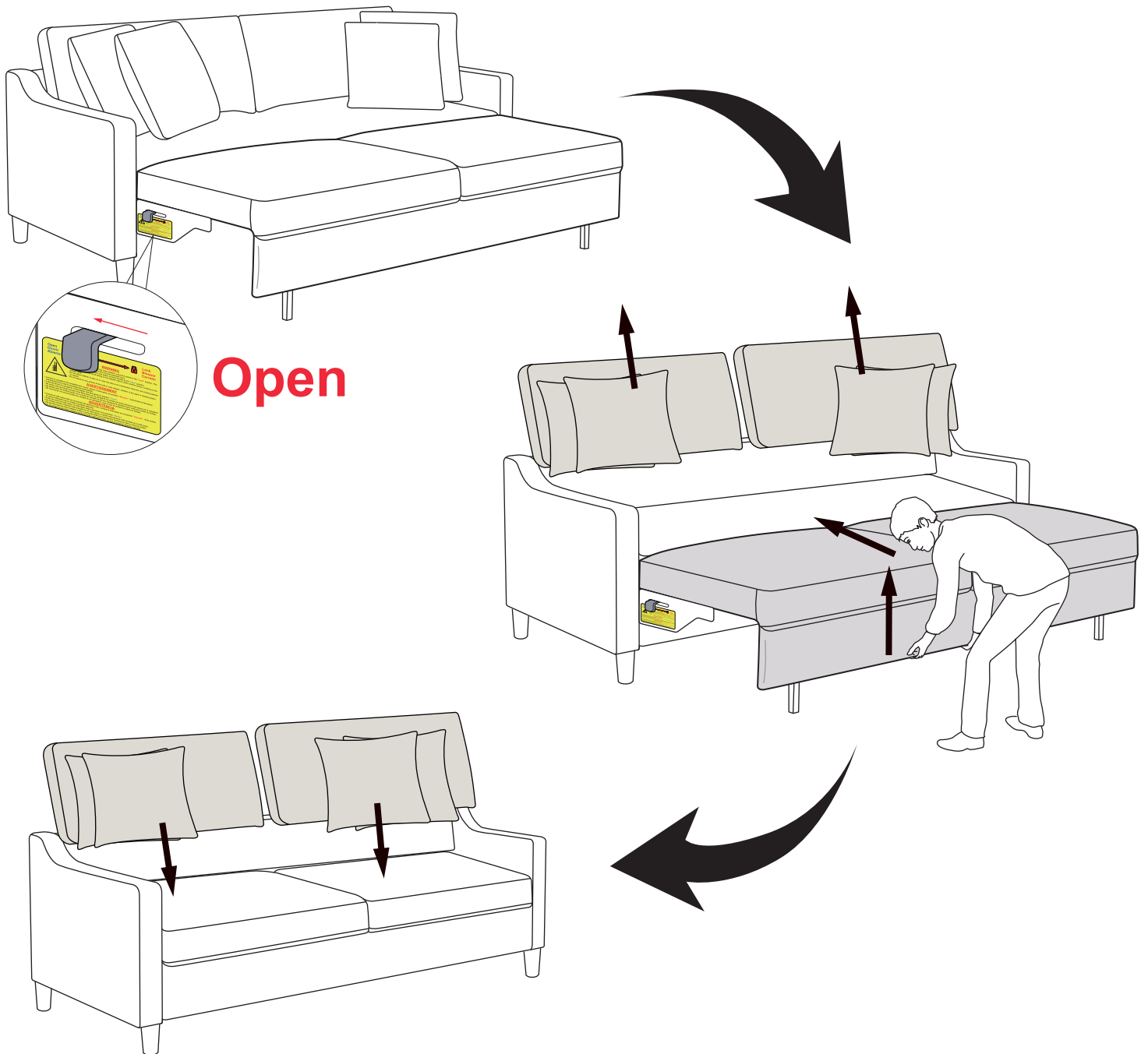


Sofa convert to bed

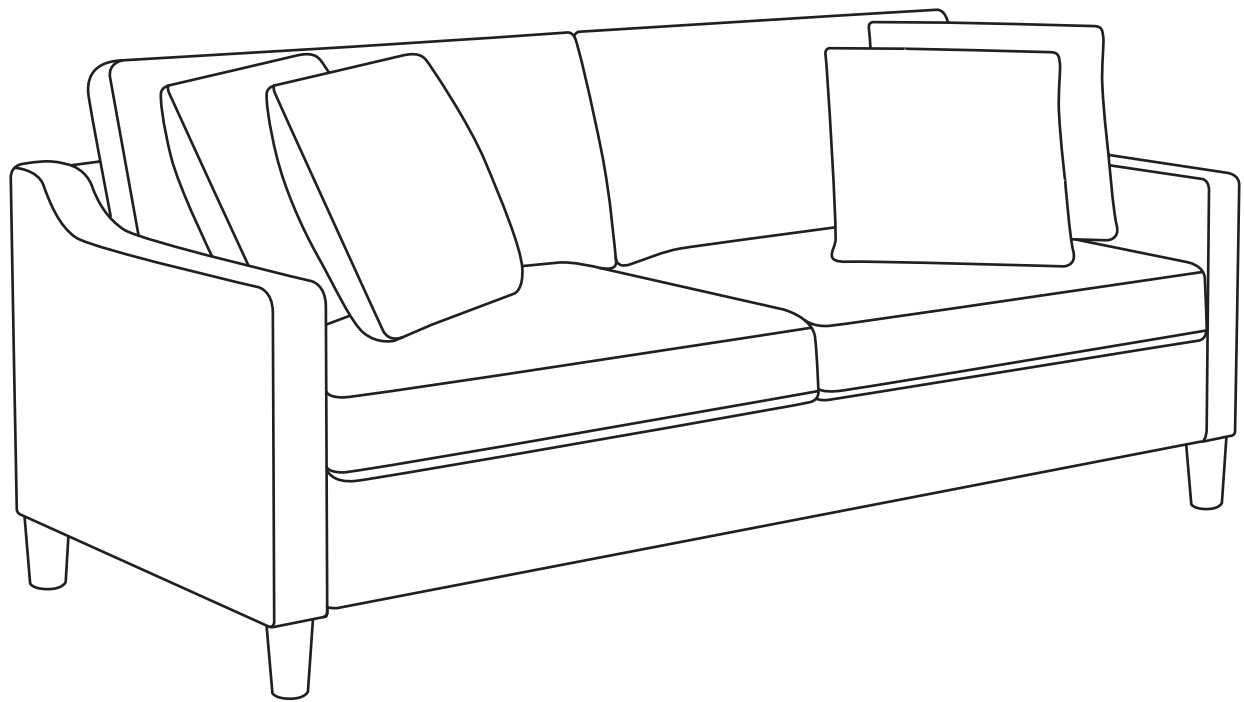


Lock

Bed convert to Sofa



ASSEMBLED VIEW



PRINTED IN VIETNAM