



ITEM# 2321-24349

SET-UP AND OPERATING INSTRUCTIONS FOR PENGUIN WITH SANTA HAT

INSTRUCTION MANUAL

IMPORTANT SAFETY INSTRUCTIONS:

When using electrical products, basic precautions should always be followed including the following:

- 1) **READ AND FOLLOW ALL SAFETY INSTRUCTIONS.**
- 2) **For indoor and outdoor use.**
- 3) **Do not secure the wiring of the product with staples or nails, or place on sharp hooks.**
- 4) **Unplug the product when not in use.**
- 5) **This is an electrical product and NOT A TOY! In order to avoid the risk of fire, burns, personal injury or electrical shock, the product should be kept out of the reach of children.**
- 6) **Do not cover or drape any type of material over the product when in use.**
- 7) **In order to reduce the risk of electrical shock, the light cord that is included with the illuminated product utilizes a polarized plug, with one blade wider than the other. The design of this light plug allows it to only be used with a polarized outlet. For safety reasons, do not use any type of extension cord or electrical outlet that is not designed for use with this type of polarized plug. DO NOT change or alter the plug in any way.**



PART LIST:

- A: Penguin
- B: Light cord
- C: Extra C7 Light Bulb (2)



Questions, problems, missing parts? Before returning to your retailer, send email to our customer service department, email address is info@pan-asian.com.hk.



WARNING: This is not a toy and is for decorative purposes only. This item is not intended for use by children under the age of 14 years. Do not place product near an open fire or heat source such as a radiator, stove, etc.

PREPARATION: Before beginning assembly the product, make sure that all parts are present. Compare parts with package contents list and diagram. If any part is missing or damaged, do not attempt to assemble, install or operate the product. Contact customer service for replacement parts.

INSTRUCTIONS FOR ASSEMBLY:

Insert the C7 bulb of the light cord into the center hole in back of each product until the plastic clip at the bottom locks into the inside edges of the center hole, as shown in the diagram.

LIGHT ACTIVATION:

After above steps are complete, insert plug into a standard 120 Volt household electrical outlet.

REPLACING THE C7 BULBS:

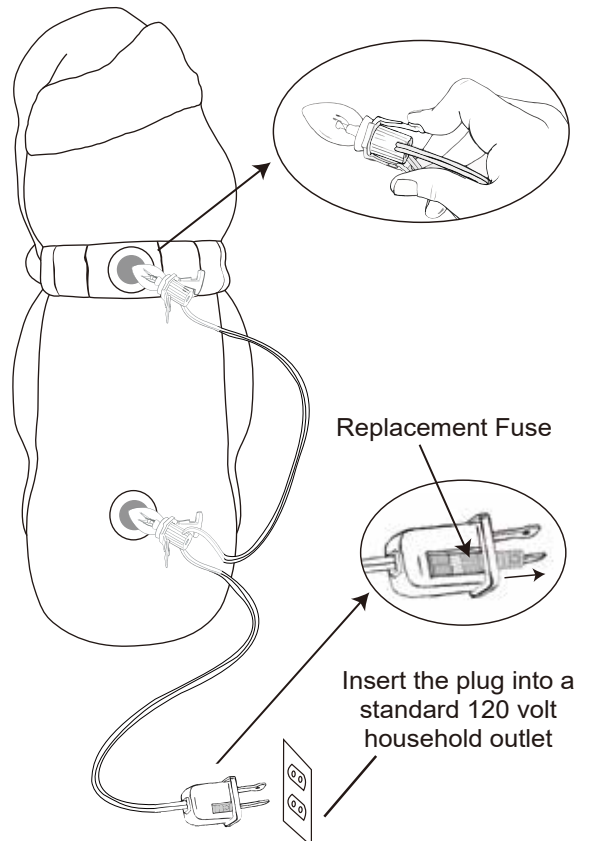
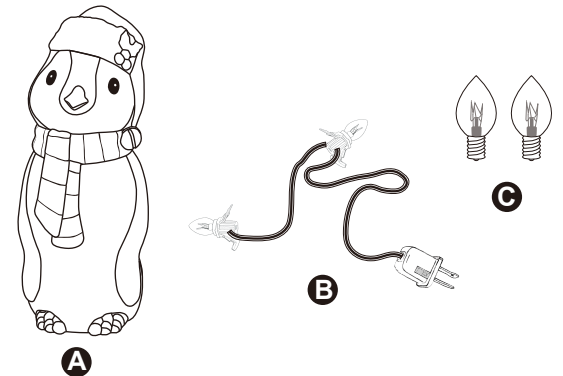
NOTE: 2 replacement C7 7W bulb are included for your future use in case bulbs break or burn out.

CAUTION: The unit must be unplugged from the electrical outlet before changing the replacement bulb. When in use, the C7 bulbs will become very hot. Please do not touch the bulb when in use. Always wait until bulb has been turned off and has had adequate time to cool before touching bulbs. Always use a clean cloth or tissue when handling the C7 bulbs.

REPLACING THE FUSE:

If product does not work when the plug is inserted into the household outlet, please replace the fuse as outlined below.

- a) Unplug the power cord, Replacement Fuse is located in the electrical plug of the power cord, as shown in the diagram.
- b) Open the cover of the in-line fuse box towards the 2-prong electrical plug and carefully remove the fuse as shown in the diagram.
- c) In order to reduce the risk of shock or fire, replace the fuse only with a 125V, 5-Amp MAX.
- d) After inserting the replacement fuse, slide the cover of the in-line fuse box into the closed position as shown in the diagram.
- e) In order to prevent risk of fire or electrical shock, do not attempt to replace the electrical plug or the electrical cord.



READ CAREFULLY & RETAIN FOR FUTURE REFERENCE!