

## **FOLDING DESK**

### **ASSEMBLY INSTRUCTIONS**

**ITEM# GPC-15310(90)**

**SKU# 810606564**

**Need help? We are here for you!**  
**[www.biglots.com/help/contact-us](http://www.biglots.com/help/contact-us)**

## **GENERAL BEST PRACTICES FOR ASSEMBLY:**

Read all instructions before starting  
Clear a flat covered space to assemble  
We recommend two people for assembly  
Note that hardware required is provided for every step  
Pay attention to orientation

## **MAINTENANCE:**

Regularly check hardware and tighten if necessary

## **CARE AND CLEANING:**

Clean periodically by wiping the product with a soft clean cloth

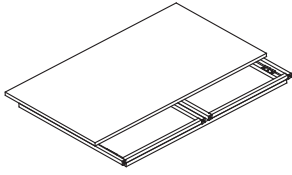
DO NOT use abrasive chemicals for cleaning

## **WARNINGS:**

Do not tighten the screws until all of them are in place

DO NOT use power tools

# PARTS LIST



x1  
Desk

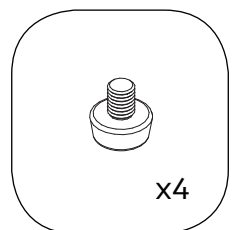
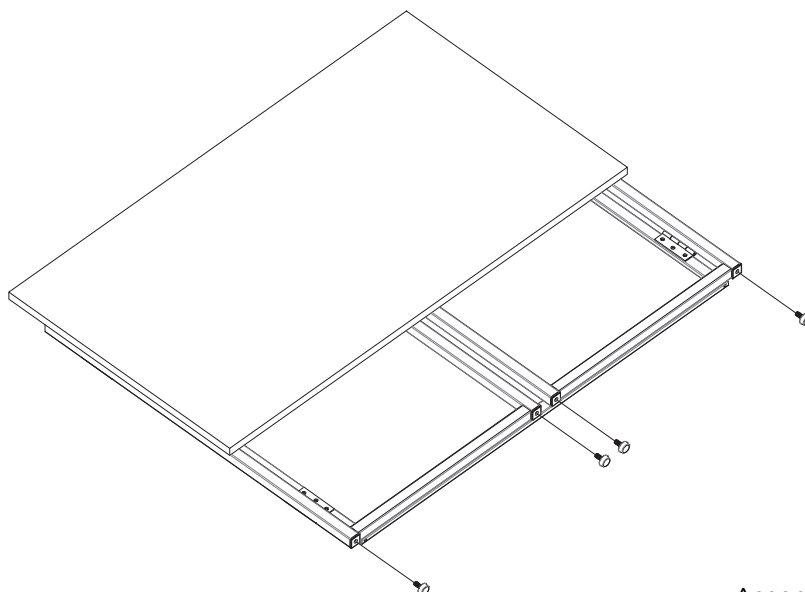
# HARDWARE LIST



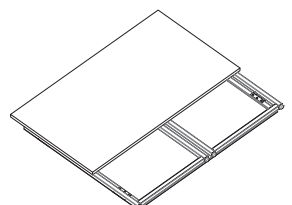
x4  
Adjuster

# STEP 1

Insert Adjuster into Desk and fully tighten.  
Assembly is now complete.



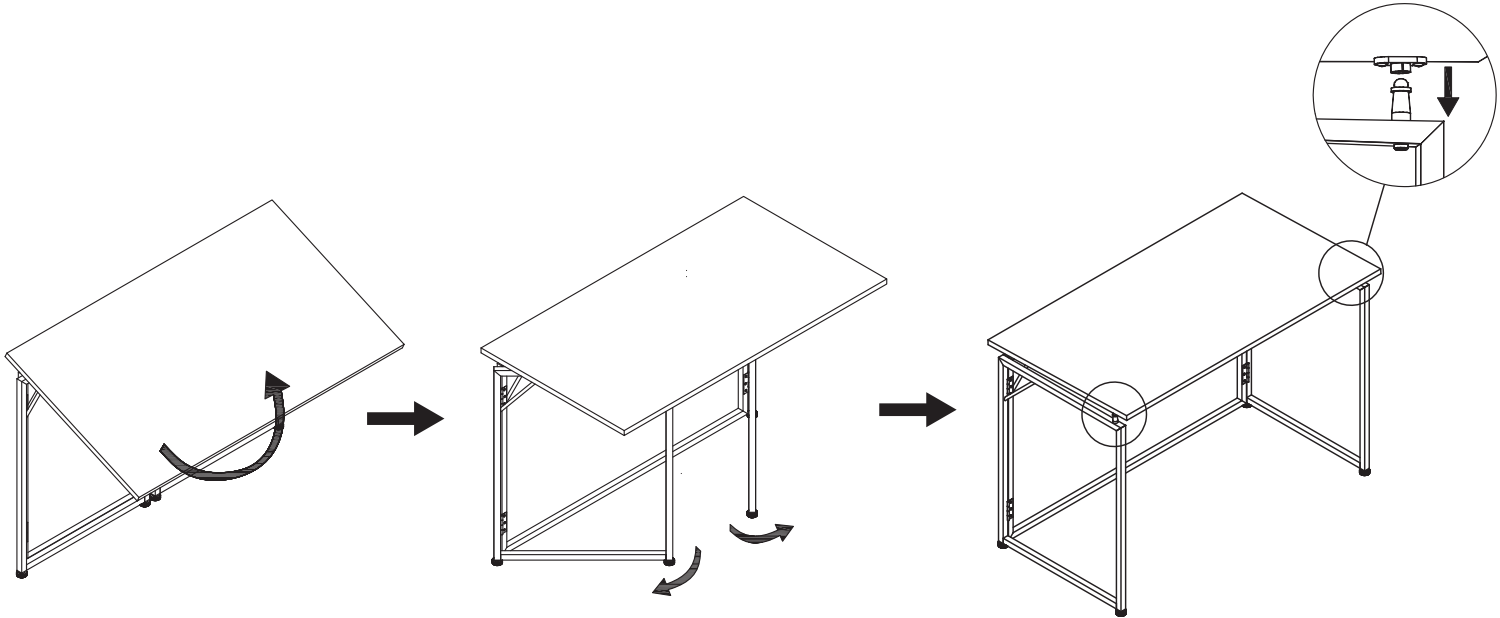
Assembled View:



## STEP 2

To unfold the desk

With assistance, lift the desktop to a horizontal position. Swing the sides outward until the pins are aligned with the hardware on the top. Press the Desk Top down until the top snaps into place.



## STEP 3

To fold the desk

With assistance, lift the Desk top upwards until the pins disengage. Swing the sides inward and lower the Desk Top downward until flat.

