



ROCKBRIDGE ALL WEATHER WICKER DINING TABLE

ASSEMBLY INSTRUCTIONS

ITEM# : GBO23-901TB

SKU# : 810580330

Need help? We are here for you! 1-888-733-8169 Toll Free

Or email us at customerservice_01@yeah.net, customerservice_02@yeah.net

customerservice_03@yeah.net

GENERAL BEST PRACTICES FOR ASSEMBLY:

Read all instructions before starting

Clear a flat covered space to begin assembly

Always best to do it with a friend

Note that hardware required is provided for every step

Pay attention to orientation

Number of the hardware corresponds to its letter in the package

Helpful hints provided along the way

WARNINGS:

Use the correct screws as indicated. All screws should be hand tightened until the complete piece is assembled (This will make the assembly process much easier). Once the piece is fully assembled, then go back and tighten all screws with provided tool.

Keep all children and pets away from assembly area. Children and pets should be supervised when they are in the area of the product construction.

Keep assembly area at least 6 feet from any obstruction such as a fence, garage, house, overhanging branches, laundry line or electrical wires.

Some parts may contain sharp edges. When assembling and using this product, basic safety precautions should always be followed to reduce the risk of personal injury and damage to the product. Please read all instructions before assembly and use.

The table is not to be used for standing purposes and will not function as a stool or step-ladder. Use on even surfaces only.

Improper use of this product or failure to use as directed may result in injury. Not intended for commercial use.

MAINTENANCE

SPILLS: Immediately wipe up the spill using a white damp cloth. Repeat process if necessary until stain is gone. Allow cushions to air dry.

ALL WEATHER WICKER PRODUCT CARE

Before using, clean the product completely with a soft dry towel. When not in use, wipe free of any dirt or loose objects, wash with a mild solution of soap and water, rinse thoroughly and dry completely. Do not use strong detergent or abrasive cleaners. Screws can loosen over a period of usage, please check the screws occasionally and re-tighten if necessary.

PARTS LIST



A

1PC Table Top



B

1PC Table Bracket



C

4PC Table Leg

HARDWARE LIST



D

16PC Washer



E

16PC Screw($\phi 6 \times 15 \text{mm}$)

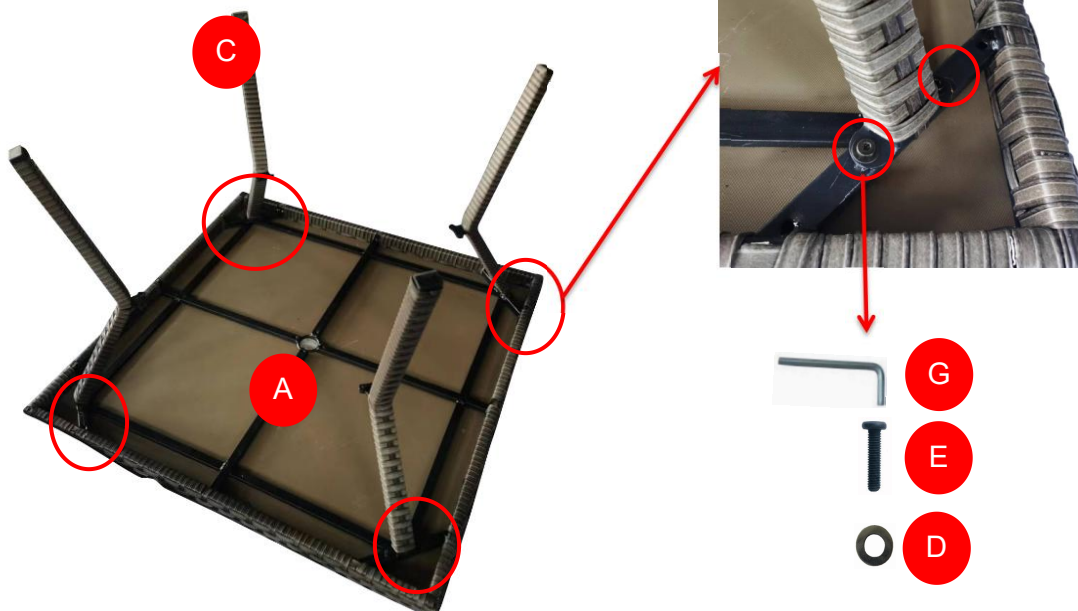


G

1PC Allen Wrench

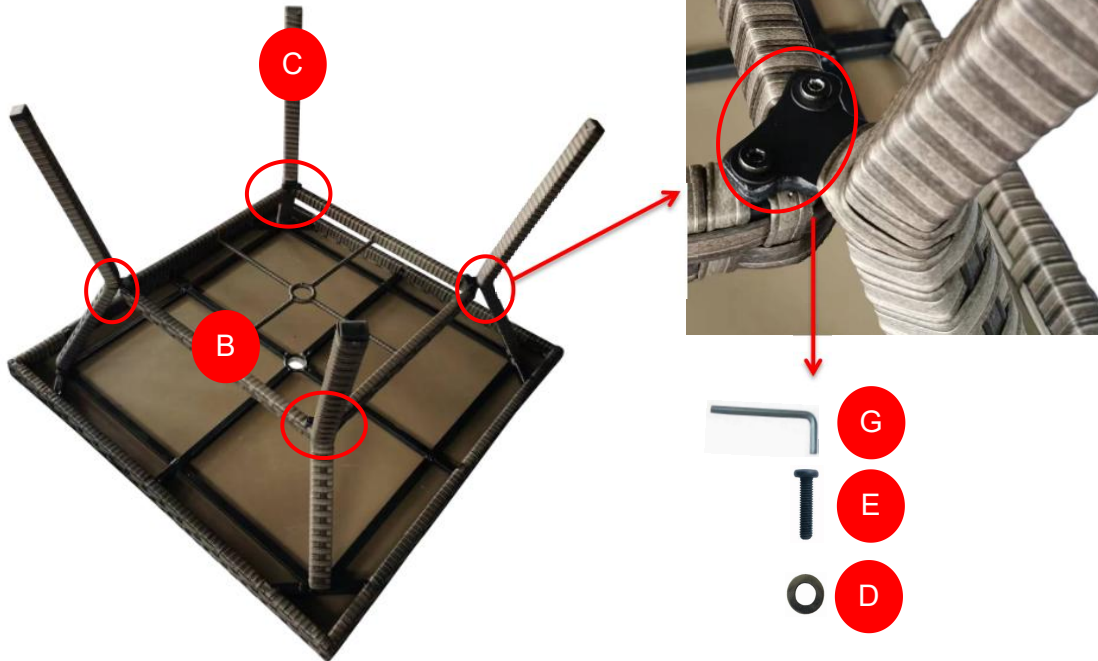
STEP 1

Secure 4 table legs (C) to table top (A) by using 8 screws (E) and 8 washers (D) with allen wrench. Do not fully tighten all screws now.



STEP 2

Secure 4 table legs (C) to table bracket (B) by using 8 screws (E) and 8 washers (D) with allen wrench. Do not fully tighten all screws now.



STEP 3

Turn over the assembled table. Verify the alignment and adjustment, fully tighten all screws.



Warranty

One year limited warranty.

Proof of purchase (dated register receipt) is required for warranty claims.

It remains the customer's responsibility for freight and packing charges to and from the service center.