

**54IN. TWO TONE SHUTTER DOOR FIREPLACE CONSOLE**

## **ASSEMBLY INSTRUCTION**

**ITEM# C2820**  
**SKU# 810571321**

**Need help? We are here for you at [biglots@aplusint.com](mailto:biglots@aplusint.com)**

## **GENERAL BEST PRACTICES FOR ASSEMBLY**

Read all instructions before starting

Clear a flat covered space to begin

We recommend two adults for assembly

Note that hardware required is provided for every step

Pay attention to orientation

Letter of the part corresponds to a sticker on the product

Number of the hardware corresponds to its number in the package

Helpful hints provided along the way

## **WARNINGS**

Please read and understand this entire manual before attempting to assemble, operate or install the product.

Modifications not approved by the part responsible for compliance could void user's authority to operate the equipment.

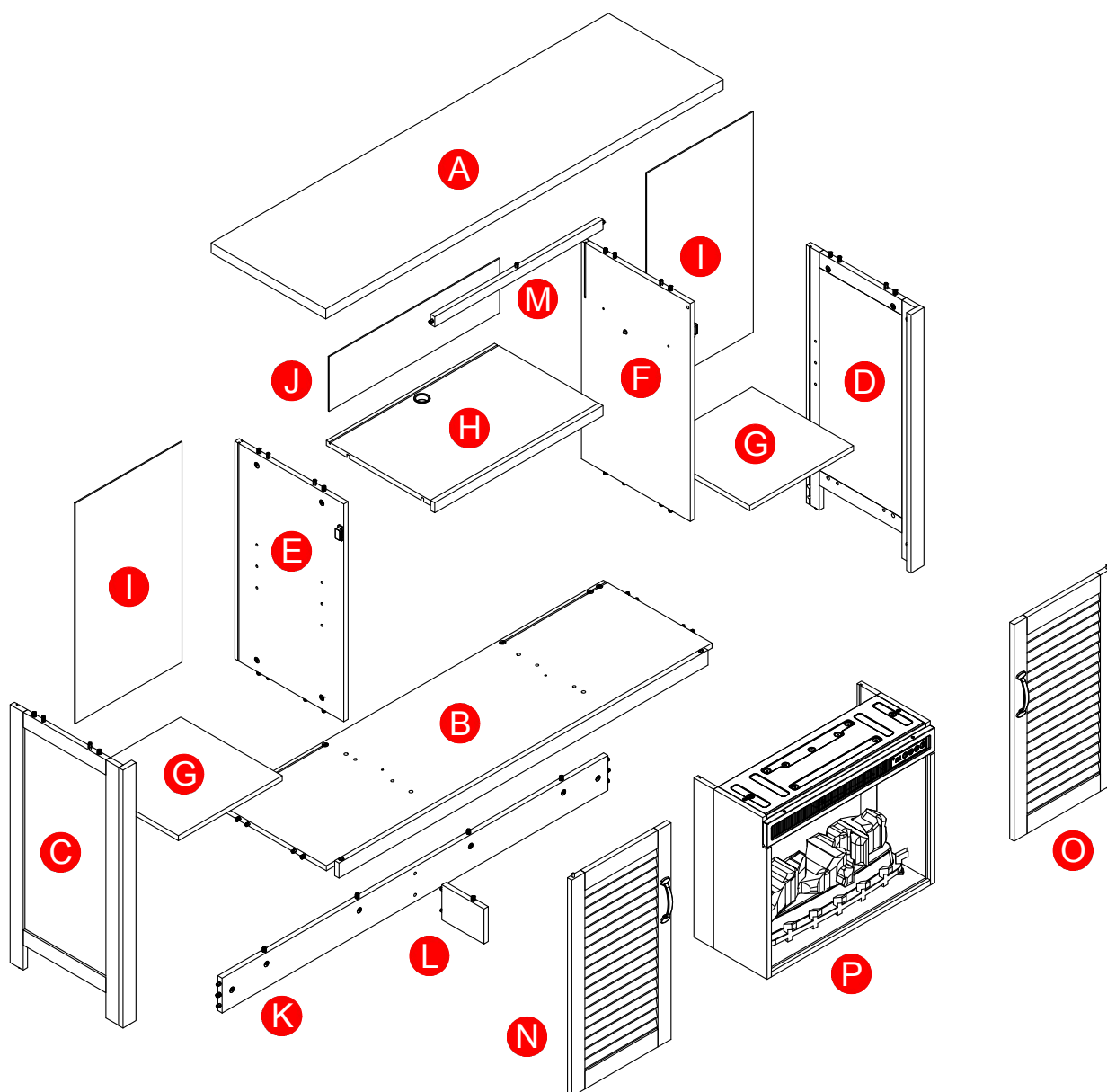
When using electrical appliances, basic precautions should always be followed to reduce the risk of fire, electric shock and injury to persons

## **MAINTENANCE**

Regularly check hardware and tighten if necessary

Regularly clean the heater so that no foreign items go into the air opening

## PARTS LIST



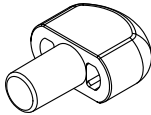
PART	DESCRIPTION	QTY	PART NO.
<b>A</b>	Top Panel	1	C2820-A
<b>B</b>	Bottom Panel	1	C2820-B
<b>C</b>	Left Side Panel	1	C2820-C
<b>D</b>	Right Side Panel	1	C2820-D
<b>E</b>	Left Center Panel	1	C2820-E
<b>F</b>	Right Center Panel	1	C2820-F
<b>G</b>	Shelf	2	C2820-G
<b>H</b>	Middle Shelf	1	C2820-H
<b>I</b>	Back Board	2	C2820-I

PART	DESCRIPTION	QTY	PART NO.
<b>J</b>	Upper Back Board	1	C2820-J
<b>K</b>	Bottom Panel Rail	1	C2820-K
<b>L</b>	Bottom Support	1	C2820-L
<b>M</b>	Top Panel Rail	1	C2820-M
<b>N</b>	Left Door	1	C2820-N
<b>O</b>	Right Door	1	C2820-O
<b>P</b>	Fireplace Heater	1	C2820-P

## HARDWARE LIST

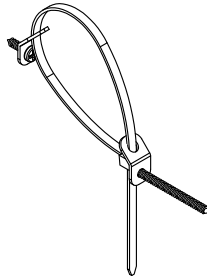
AA

Shelf Pin (8x)



BB

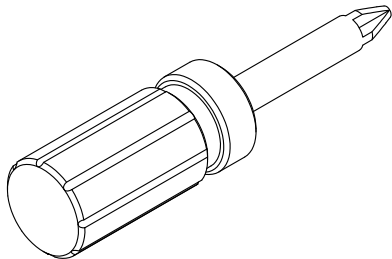
Tip Restraint Hardware (1x)



## TOOL LIST

CC

Phillip #3 Screwdriver (1x)



# SAFETY INFORMATION

## IMPORTANT INSTRUCTIONS

When using electrical appliances, basic precautions should always be followed to reduce the risk of fire, electric shock and injury to persons, including the following.

## DANGER

To reduce the risk electrical shock, tipping and instability of the product.

- Read all instructions before installing or using this heater.
- If the information in this manual is not followed exactly, an electric shock or fire may result causing property damages, personal injury or loss of life.
- **ALWAYS** unplug this appliance / furnishing from the electrical outlet before cleaning or servicing.

## WARNING

- This appliance is hot when in use. To avoid burns, **DO NOT** let bare skin touch hot surfaces. Keep combustible material, such as furniture, pillows, bedding papers, clothes and curtains at least 3 feet from this appliance and keep them away from the sides and rear.
- Extreme caution is necessary when any heater is used by or near children or individuals with disabilities and whenever the fireplace is left operating and unattended.
- **DO NOT** run cord under carpeting. **DO NOT** cover cord with throw rugs, runners, or similar coverings.
- **DO NOT** route cord under furniture or appliances. Arrange cord away from traffic areas where it will not be tripped over.
- **DO NOT** insert or allow foreign objects to enter any ventilation or exhaust opening as this may cause an electric shock or fire, or damage the appliance.
- This appliance has hot and arcing or sparking parts inside. **DO NOT** use it in areas where gasoline, paint or flammable vapor or liquid are used or stored. This fireplace should not be used as a drying rack for clothing. Christmas stockings or decorations should not be hung in the area around it.
- Use this appliance only as described in the manual. Any other use is **NOT** recommended by the manufacturer and may cause fire, electric shock or injury to persons.
- Reduce the risk of burns, fire, electrical shock, or injury to persons:
  - Unplug from outlet before putting on or taking off parts.
  - Close supervision is necessary when this furnishing is used by, or near children, invalids, or disabled persons.
  - Use this furnishing only for its intended use as described in these instructions. Do not use attachments not recommended by the manufacturer.
  - Keep the cord away from heated surfaces.
  - Never operate the furnishing with the air openings blocked. Keep the air openings free of lint, hair and alike.
  - Never drop or insert any object into any opening.
  - **DO NOT** operate where aerosol (spray) products are being used or where oxygen is being administered.
  - To disconnect, turn all controls to the OFF position, then remove the plug from the outlet.
- Risk of Electric Shock. Connect this furnishing to a properly grounded outlet only. See Grounding Instructions (Page 6).
- Risk of Electric Shock, Fire and Injury. Review the assembly instructions to confirm that the appropriate critical components and accessories are being used with the furnishing.

## SAFETY INFORMATION (CONTINUED)

### CAUTION

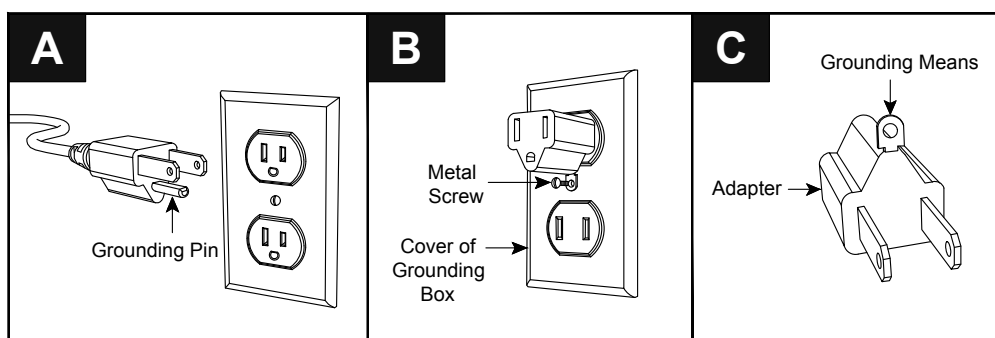
- **DO NOT** operate any heater with a damaged cord or plug or after the heater malfunction.
- **DO NOT** operate any heater if it has been dropped or damaged in any manner. Disconnect power at service panel and have the heater inspected by a reputable electrician before reusing.
- Any repairs to this fireplace should be carried out by a qualified service person.
- Under no circumstances should this fireplace be modified. Parts having to be removed for servicing must be replaced prior to operating this fireplace again.
- **Household use only**
- **Do not use outdoors**
- This heater is not intended for use in bathrooms, laundry areas and similar indoor locations. **NEVER** place the heater where it may fall into a bathtub or other water container.
- To disconnect this appliance, turn all controls to OFF position, then remove plug from the outlet.
- **ONLY** connect to properly grounded outlets.
- This appliance, when installed, must be electrically grounded in accordance with local codes, with the current CSA C22.1 Canadian Electrical Code or follow U.S.A. installations, follow local codes and the National Electrical Code, ANSI/NFPA NO. 70.
- To prevent a possible fire, **DO NOT** block air intakes or exhaust in any manner. **DO NOT** use on soft surfaces, like bed, where opening may become blocked.
- The heater **MUST NOT** be located immediately below a socket-outlet.
- **ALWAYS** plug the heater directly into a wall outlet / receptacle. **NEVER** use with an extension cord or re-loadable power tap (outlet / power strip).
- **DO NOT** slide insert on top of wood to avoid scratching wood surface.
- **DO NOT** place any object on top of the insert or block the air intakes / vents as this can cause the unit to overheat and could cause a fire.

### ELECTRICAL CONNECTION

- A 15-Amp, 120-Volts, 60 Hz circuit with a properly grounded outlet is required. Preferably, the fireplace will be on a dedicated circuit as other appliances on the same circuit may cause the circuit breaker to trip or blow the fuse when the heater is in operation. The unit comes standard with 6-ft. three-wire cord, exiting from the rear of the fireplace. **DO NOT** exceed the current rating of the current tap.

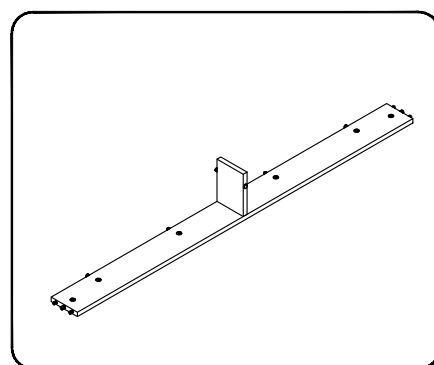
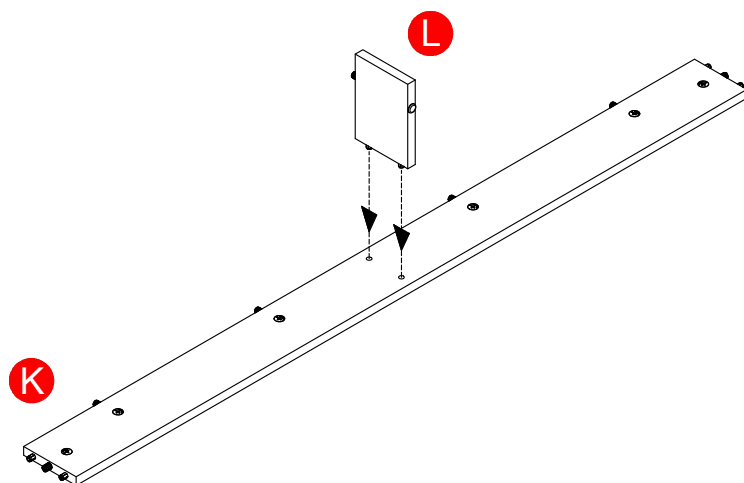
### GROUNDING INSTRUCTIONS

- This heater is for use on 120-Volt. The cord has a plug as shown below. See illustration or grounding instruction. An adapter shown at C is available for connecting three-prong grounding type plugs to two-slot receptacles. The green grounding plug extending from the adapter must be connected to a permanent ground such as a properly grounded outlet box. The adapter should not be used if a three-slot grounded is not available.



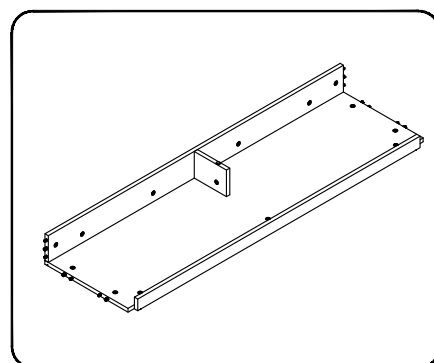
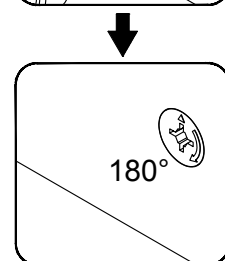
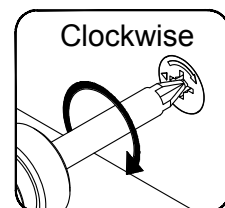
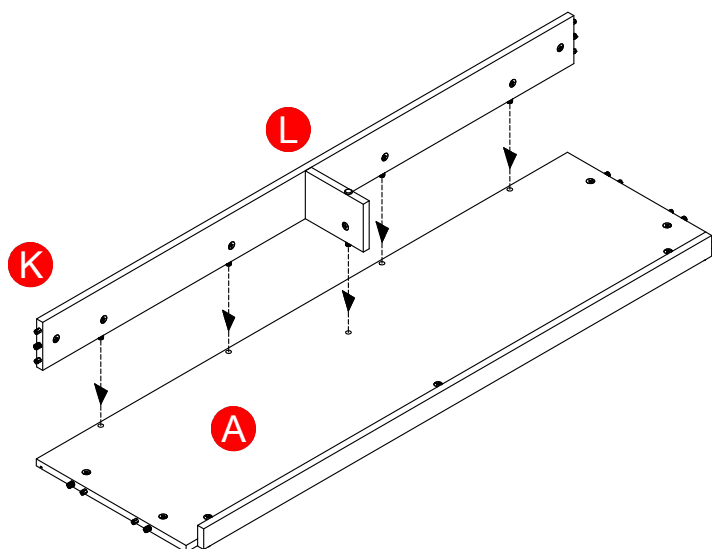
## STEP 1

Attach the Bottom Support (L) to the Bottom Panel Rail (K)



## STEP 2

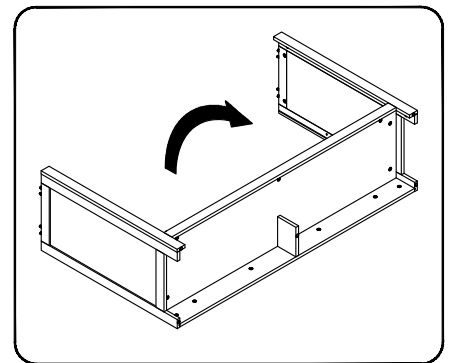
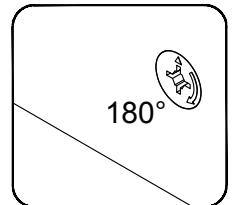
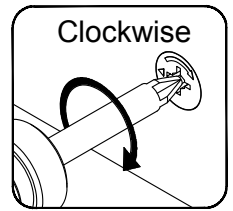
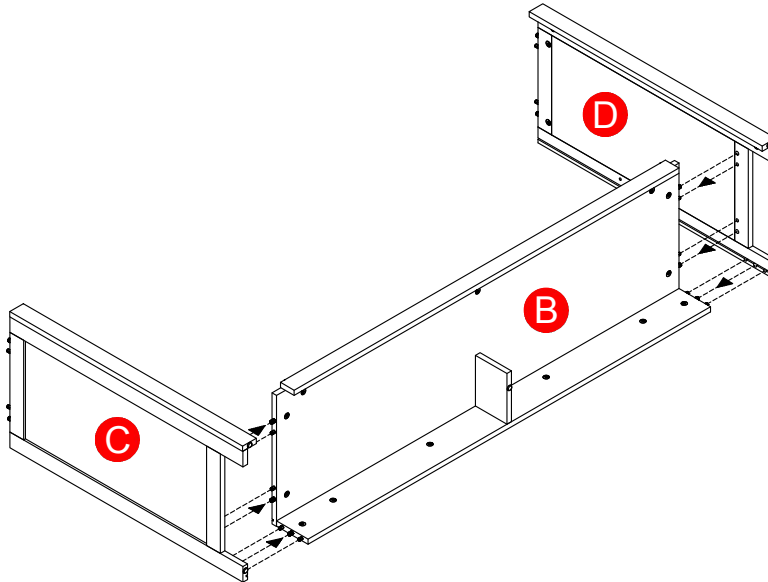
Insert the assembled Bottom Panel Rail (K,L) into the holes on the Bottom Panel (B). Using the included Phillip #3 Screwdriver (CC), turn the Locking Nut in clockwise direction up to 180° from the connection joint to properly secure the panels.



## STEP 3

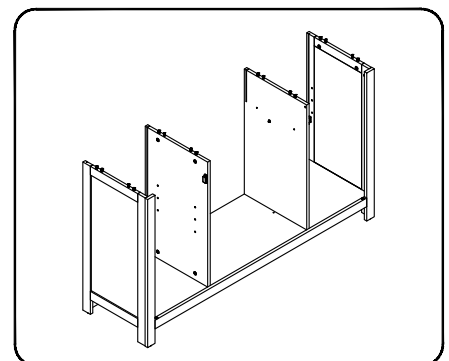
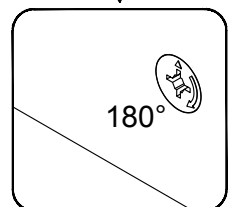
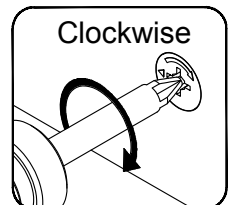
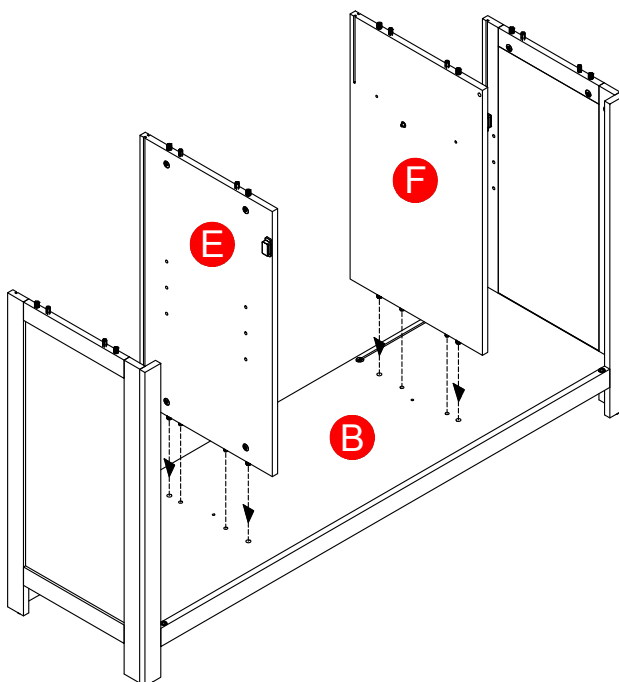
Attached the two Side Panels (C,D) to the assembled Bottom Panel (B). Turn the Locking Nut in clockwise direction up to 180° from the connection joint to properly secure the panels.

Carefully turn the assembled parts upright.



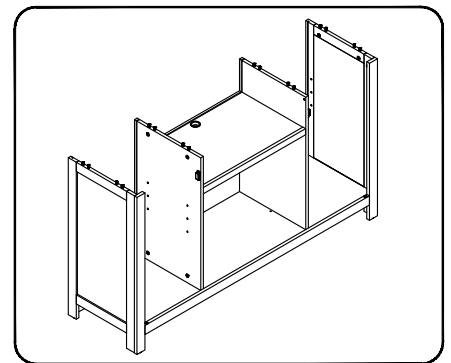
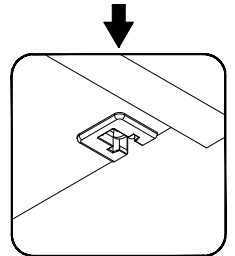
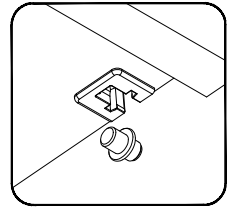
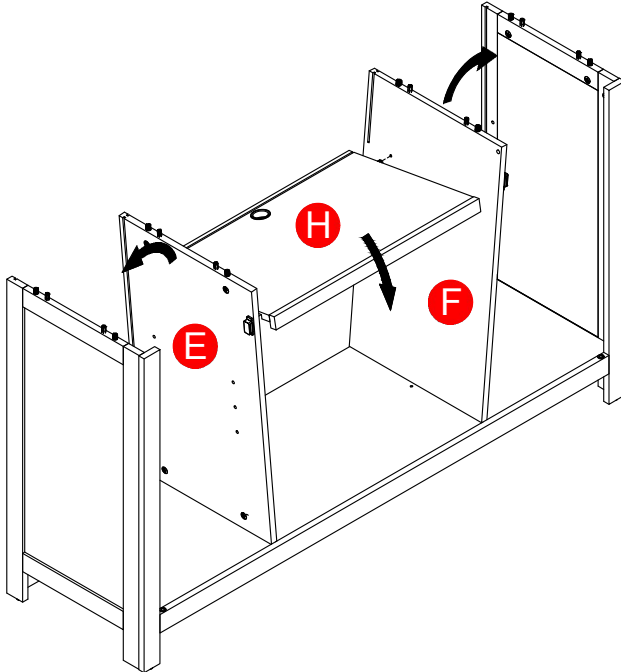
## STEP 4

Attach the Center Panels (E,F) into the holes in the middle of the Bottom Panel (B). Turn the Locking Nut in clockwise direction up to 180° from the connection joint to properly secure the panels.



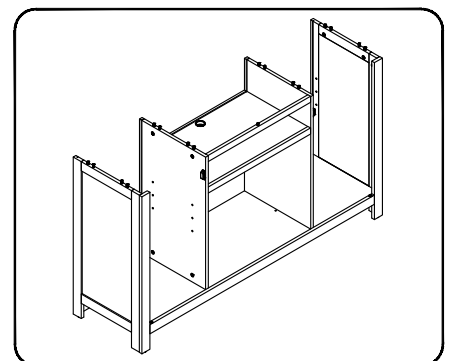
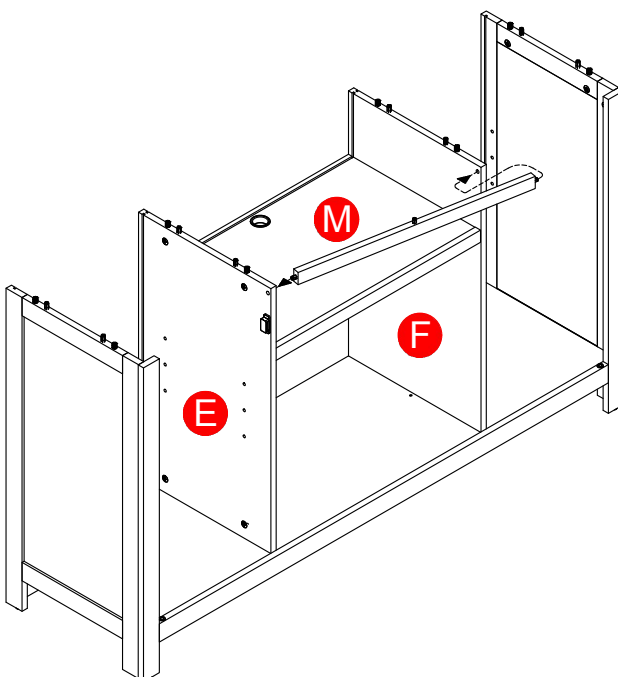
## STEP 5

Assemble the Middle Shelf (H) in between the two Center Panels (E,F). First, slot in the two dowels at the back of the Middle Shelf into the holes on the Center Panels. Then swing the Middle Shelf downwards until the Shelf Nut enters the Pins on the Center Panels.



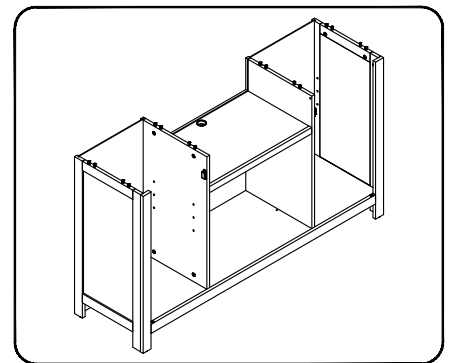
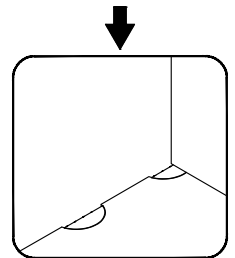
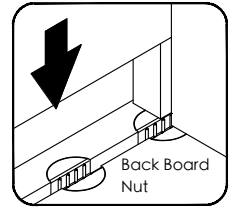
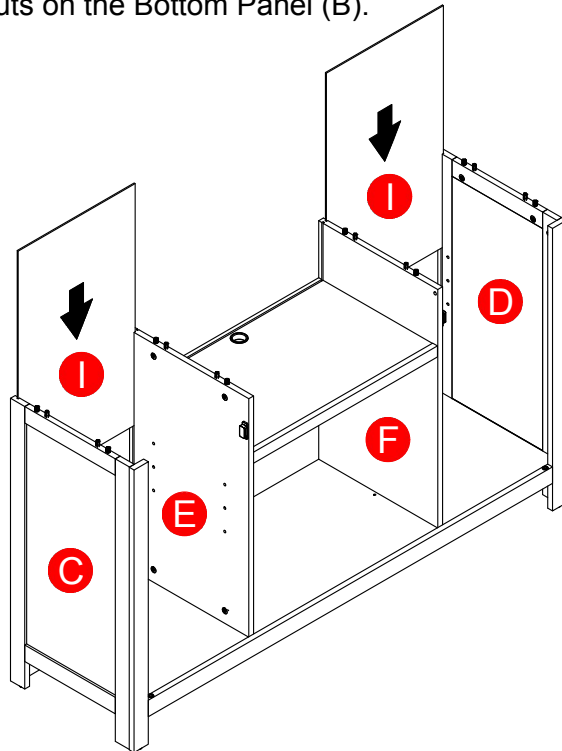
## STEP 6

Connect the Top Panel Rail (M) into the holes on the upper corner of the Center Side Panels (E/F)



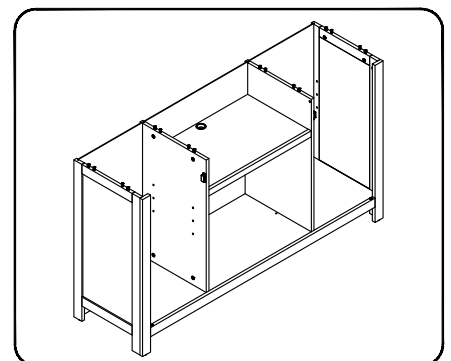
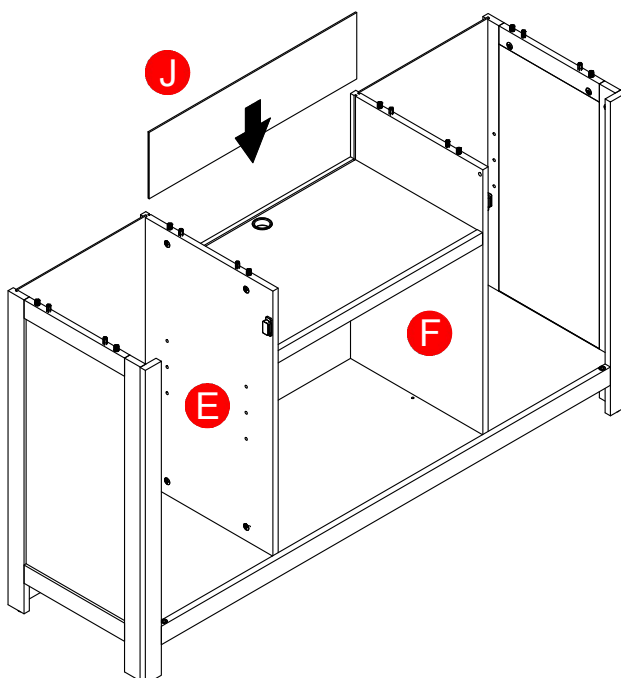
## STEP 7

Slide in the Back Boards (I) into the grooves on the Side Panels (C,D) and Center Panels (E,F). Push the Back Boards downwards until they are fitted into the Back Board Tightening Nuts on the Bottom Panel (B).



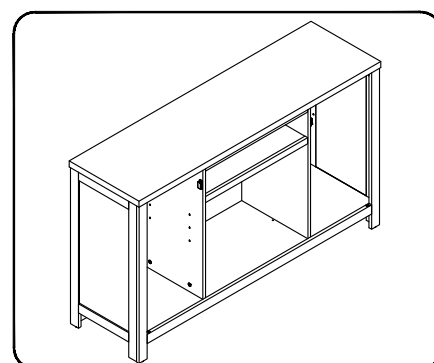
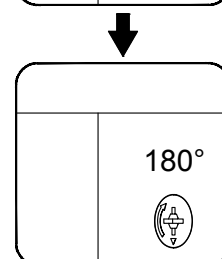
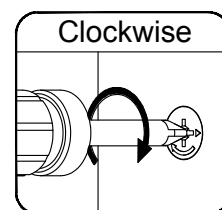
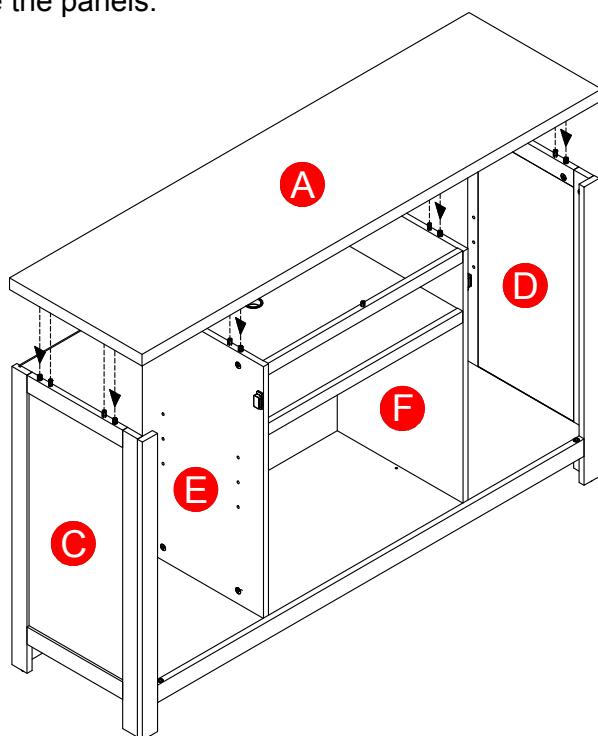
## STEP 8

Slide in the Upper Back Board (J) into the grooves on the Center Panels (E,F).

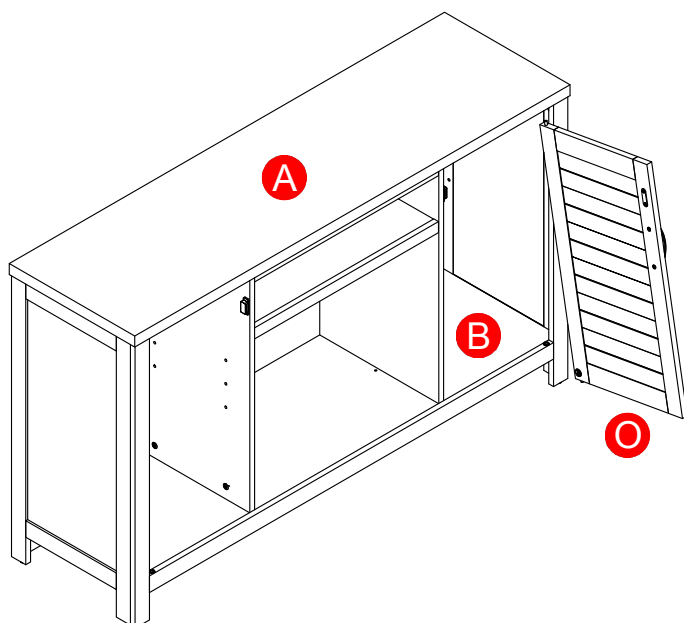


## STEP 9

Assemble the Top Panel (A) onto the Side Panels (C,D) and Center Panels (E,F). Turn the Locking Nut in clockwise direction up to 180° from the connection joint to properly secure the panels.

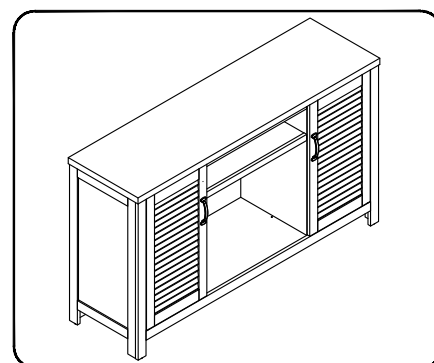
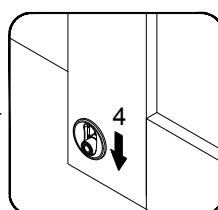
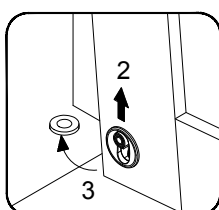
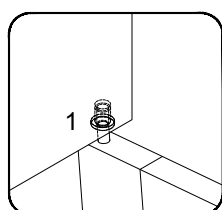


## STEP 10



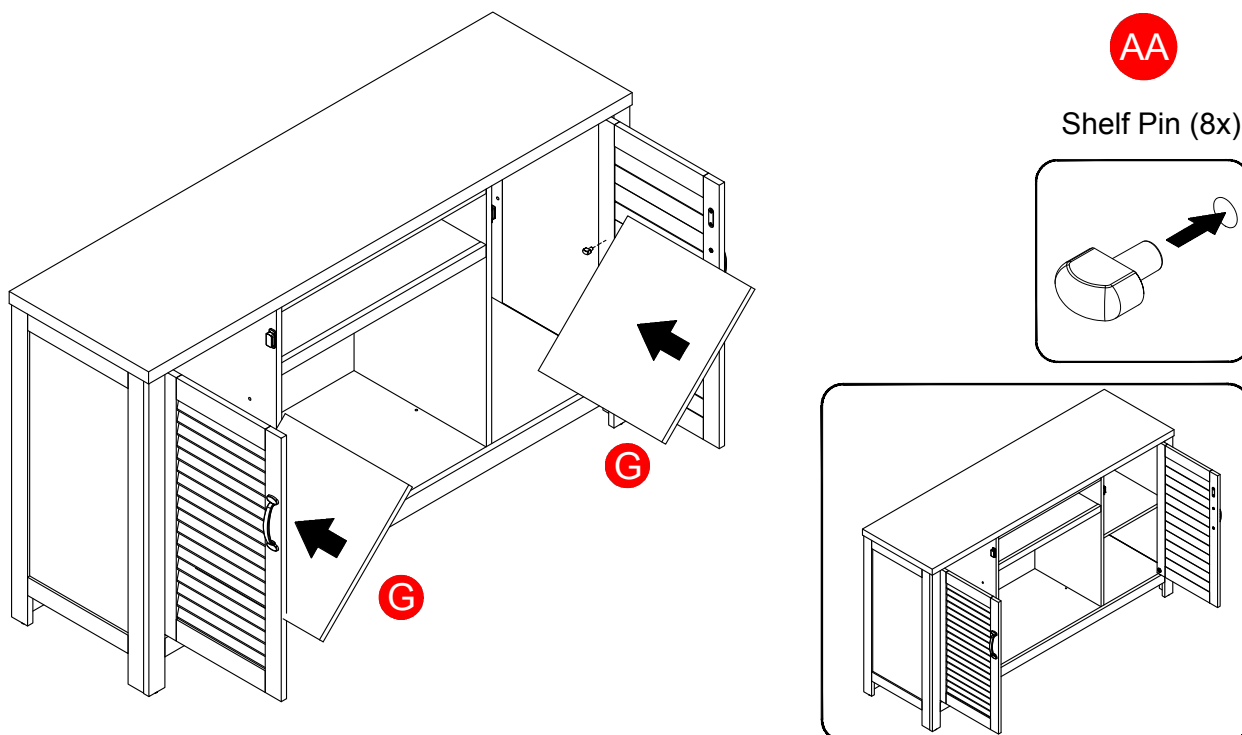
Insert the Top Pin of the Right Door (O) into the hole underneath the Top Panel (A). Pull the latch at the bottom of the Door to re-tract the bottom pin and position it over the hole on the Bottom Panel (B). Release the latch to insert the pin into the hole.

Repeat for the other Left Door (N).



## STEP 9

Insert the Shelf Pins (AA) provided into the holes on the Side Panels (C,D) and Center Panels (E,F) at desired height, ensuring they are level. Place the Shelves (G) on top of the Shelf Pins.

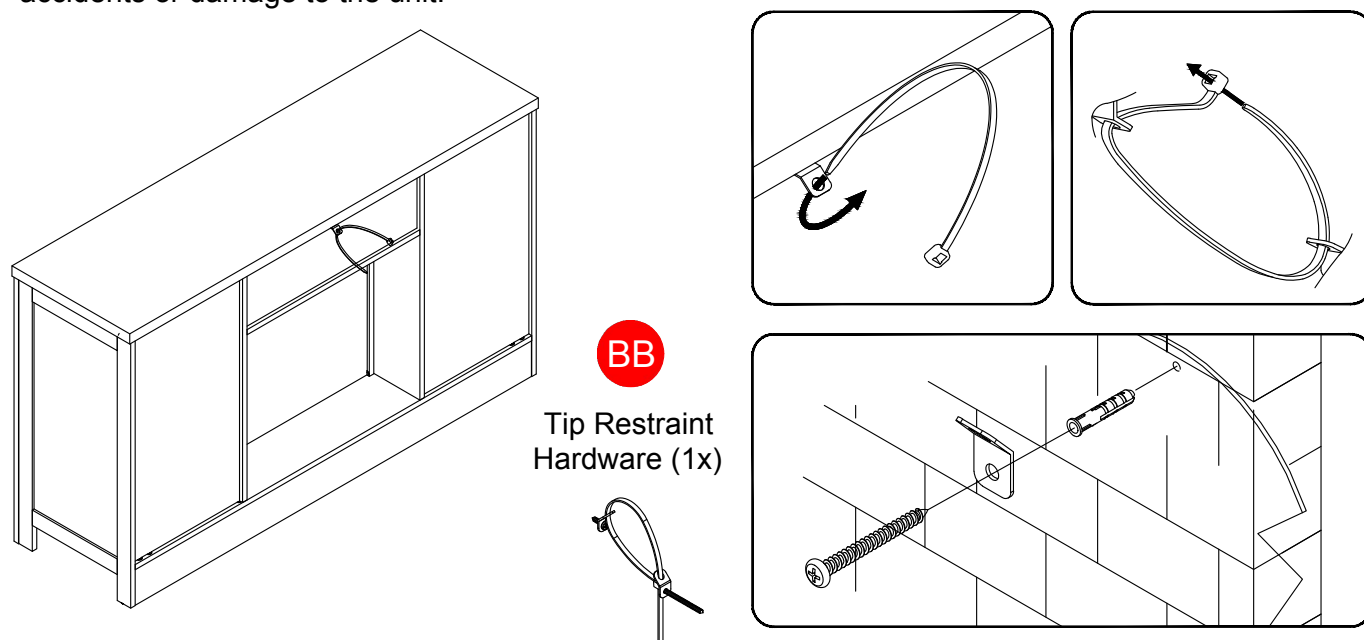


## TIP RESTRAINT HARDWARE

Assembly is not complete. With the help of another person, move the unit to the final desired location. Once in the final position, you may attach the Tip Restraint Hardware (BB) to the wall.

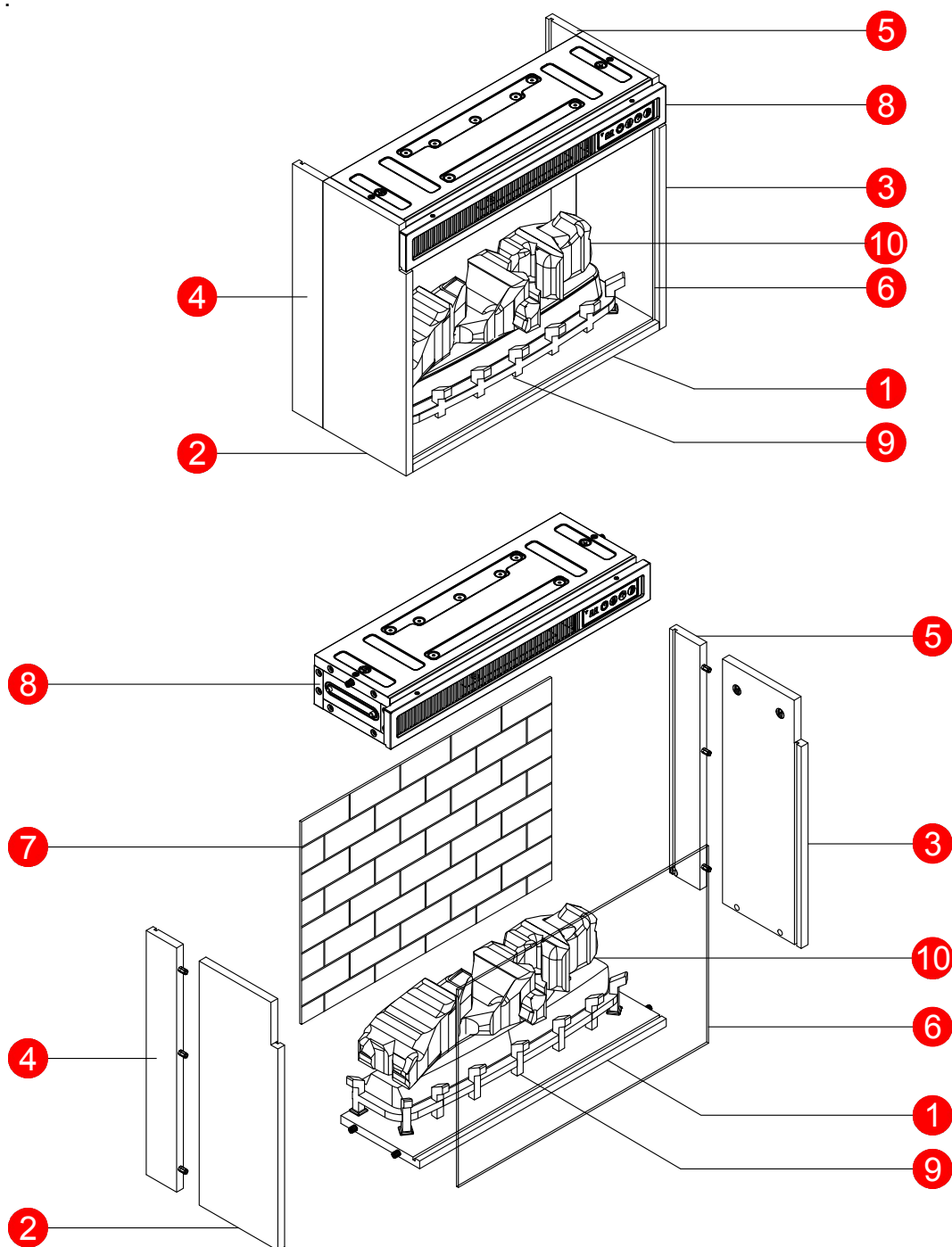
### WARNING

You must install the Tip Restraint Hardware (BB) to the back of the Top Panel (A) to help prevent any accidents or damage to the unit.



## FIREPLACE HEATER - PARTS LIST

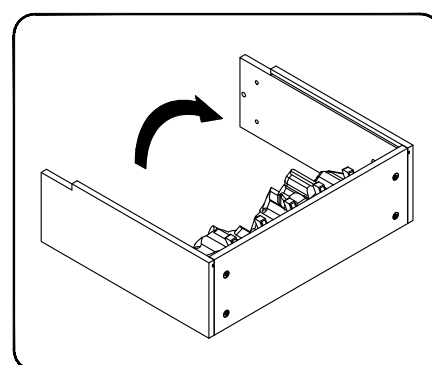
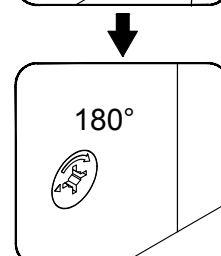
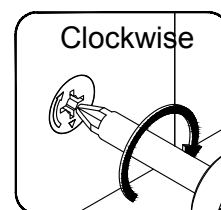
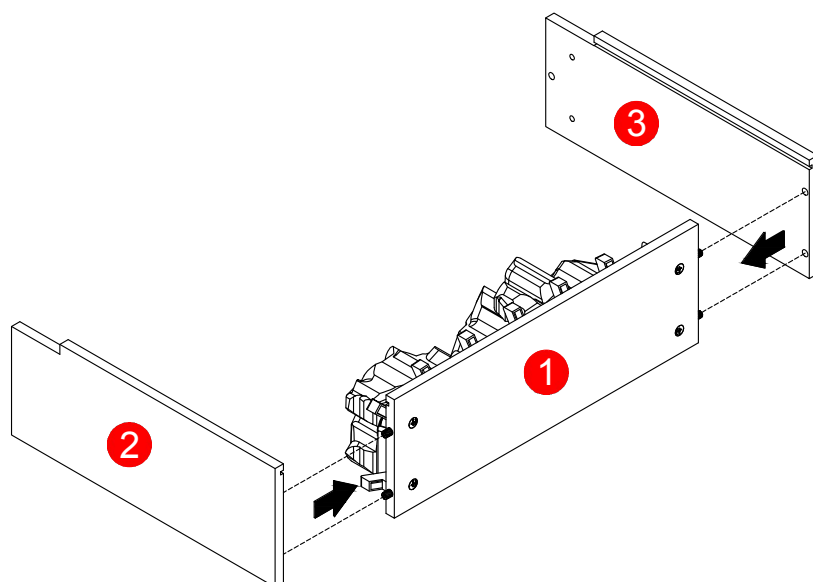
The Fireplace is Ready-To-Assemble. A Phillip #3 Screwdriver is the only tool required to assemble the heater.



PART	DESCRIPTION	QTY	PART NO.	PART	DESCRIPTION	QTY	PART NO.
1	Bottom Panel	1	AF02-1	6	Front Tempered Glass	1	AF02-6
2	Left Side Panel	1	AF02-2	7	Back Board	1	AF02-7
3	Right Side Panel	1	AF02-3	8	Heater AF-02	1	AF02-8
4	Left Back Rail	1	AF02-4	9	Fireplace Grate	1	AF02-9
5	Right Back Rail	1	AF02-5	10	Firelogs	1	AF02-10

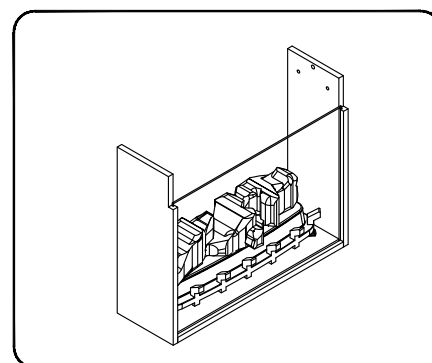
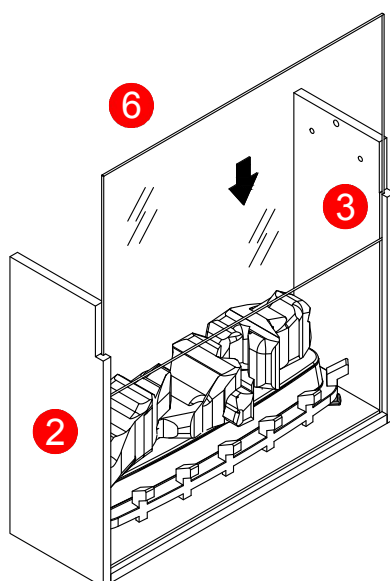
## FIREPLACE HEATER - STEP 1

Attach the Side Panels (2,3) to the Bottom Panel (1). Turn the Locking Nut in clockwise direction by 180° to secure the panels.



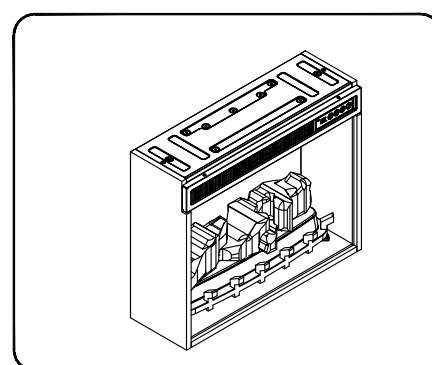
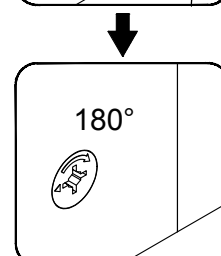
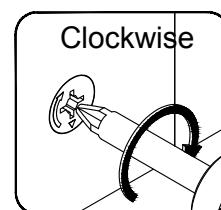
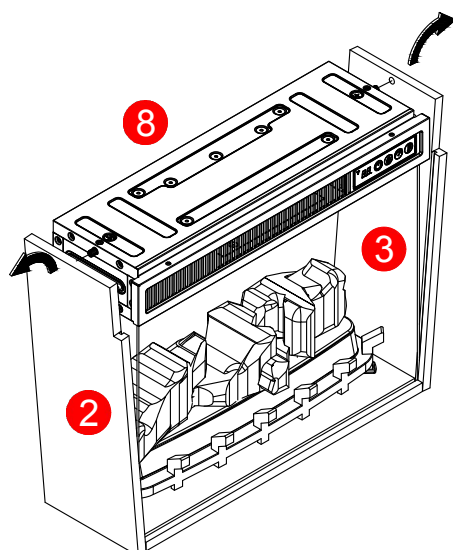
## FIREPLACE HEATER - STEP 2

Slide in the Tempered Glass (6) into the grooves on the front of the Side Panels (2,3).



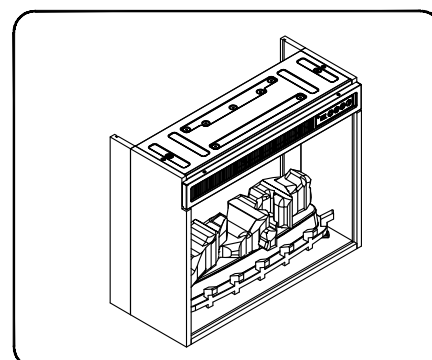
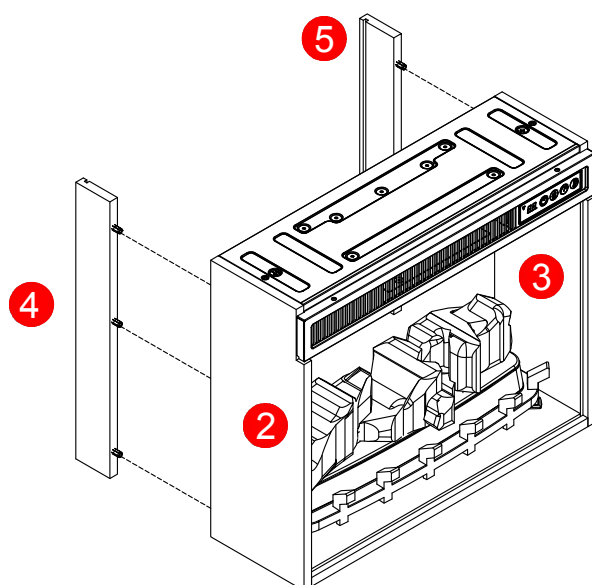
## FIREPLACE HEATER - STEP 3

Open the Side Panels (2,3) sideways a bit. Insert the Heater (8) in between the two side panels by matching the pins and bolt on the heater to the holes on the Side Panels. Turn the Locking Nut in clockwise direction by 180° to secure the heater.



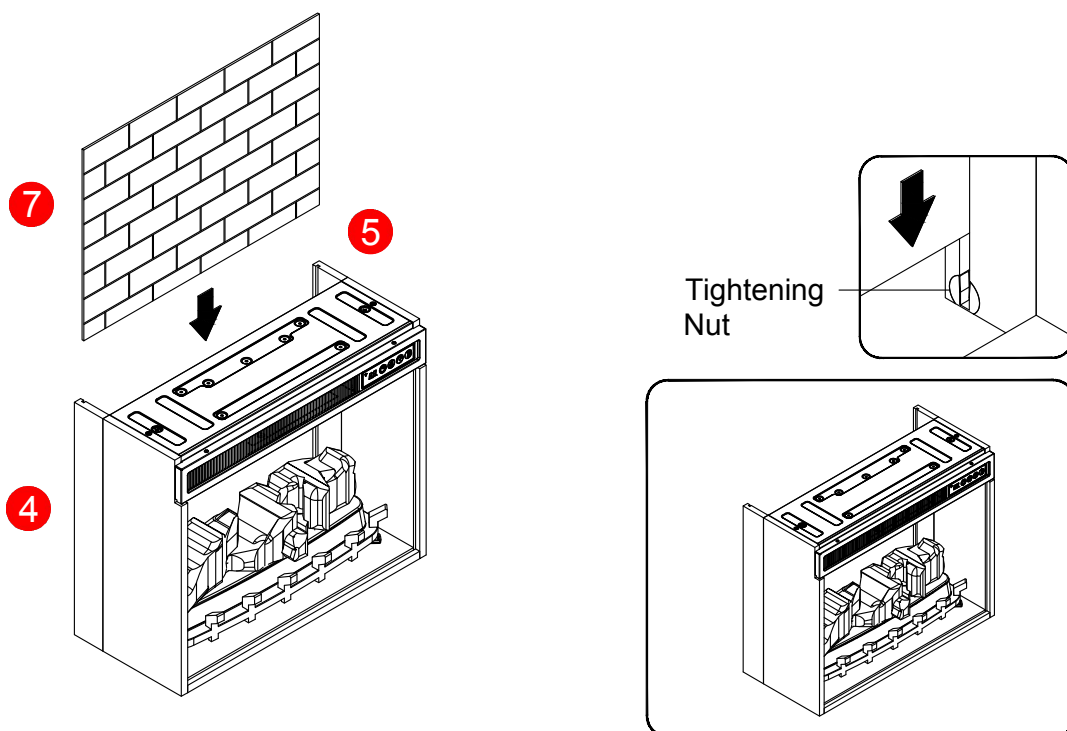
## FIREPLACE HEATER - STEP 4

Assemble the Back Rails (4,5) into the back of the Side Panels (2,3).



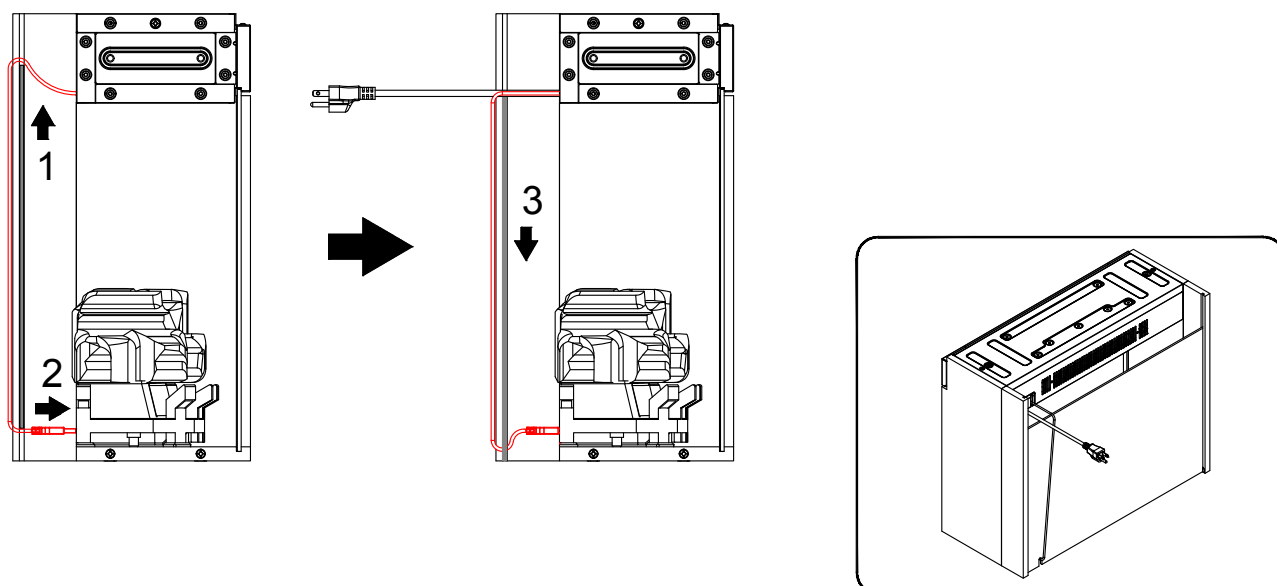
## FIREPLACE HEATER - STEP 5

Slide in the Back Board (7) into the grooves on the Back Rails (4,5). Slide in until the Back Board is tightened by the Nut at the bottom. The Nut will ensure that the box is straightened and the Back Board is secured.



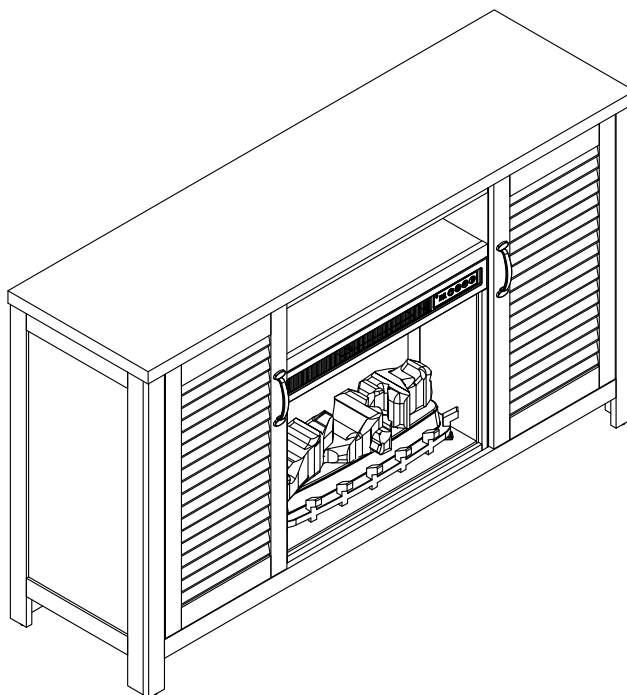
## HEATER AND FIREPLACE GRATE CABLE CONNECTION

Raise the Back Board (7) upwards a bit so that there is a gap at the bottom for the USB cable to pass through. Plug the USB cable into the USB port behind the Fireplace Grate (9). Push the Back Board downwards in place.



## FINAL ASSEMBLY COMPLETED.

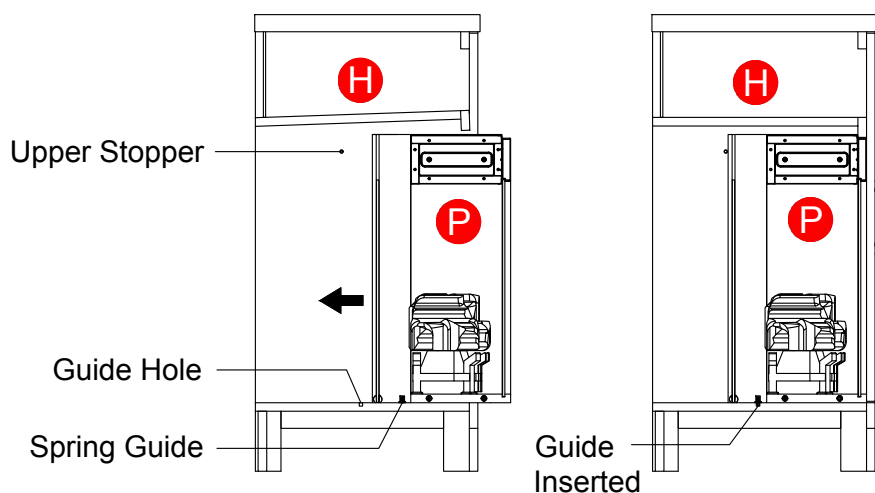
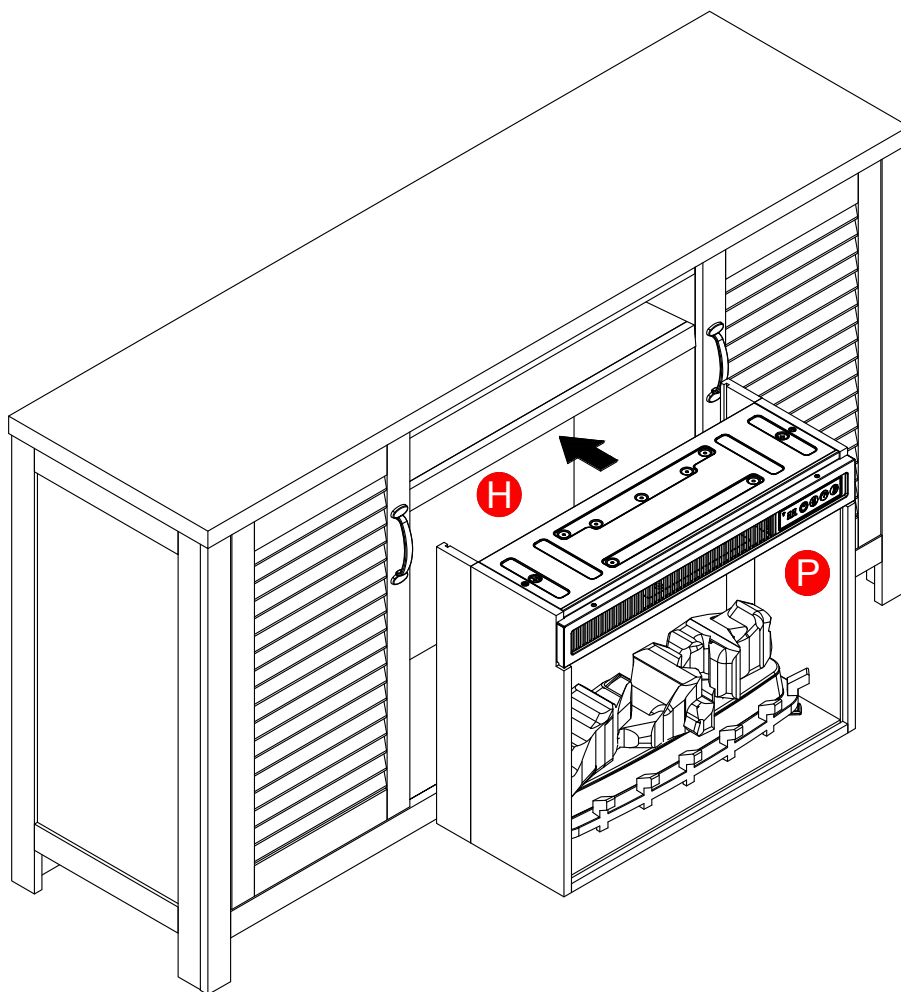
The Console and the Heater is now assembled and you may now insert the Heater into the Console to complete the assembly. (See Page 18)



## INSERTION OF HEATER INTO ASSEMBLED CABINET

Once the Fireplace Heater (P) is fully assembled, it can be easily inserted into a TV Stand. The Heater is inserted into a TV Stand simply by sliding it from the front of the TV Stand.

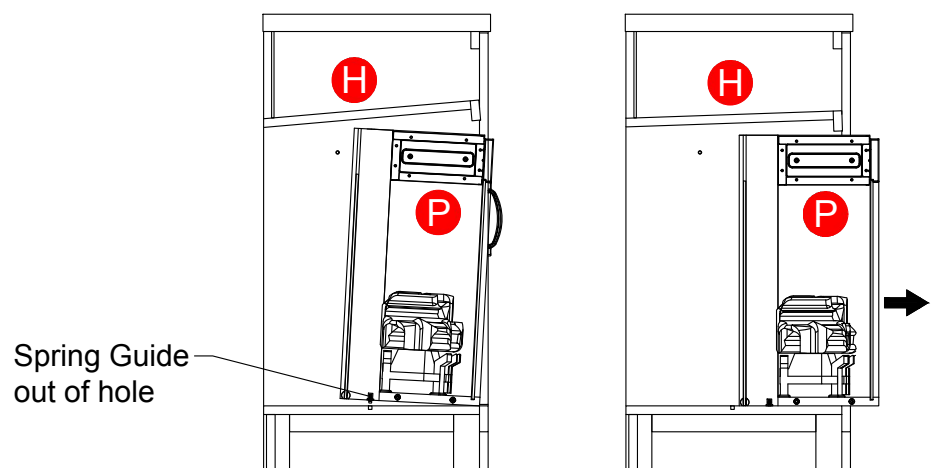
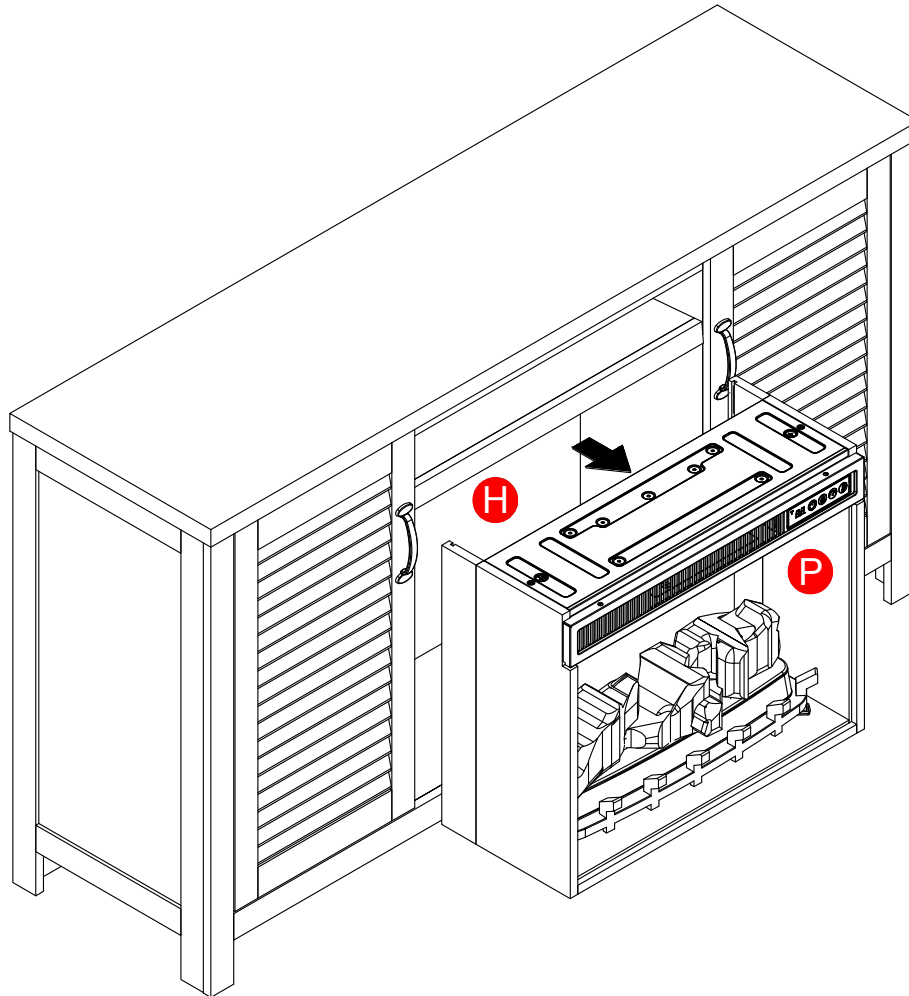
- First, raise up the Middle Shelf (H) a bit so that the rear of the Fireplace can be inserted.
- Then, simply push in the Fireplace inwards, until the bottom Spring Guide drop into the holes on the Bottom Panel.
- Return the Middle Shelf to original position.



## REMOVAL OF HEATER FROM ASSEMBLED CABINET

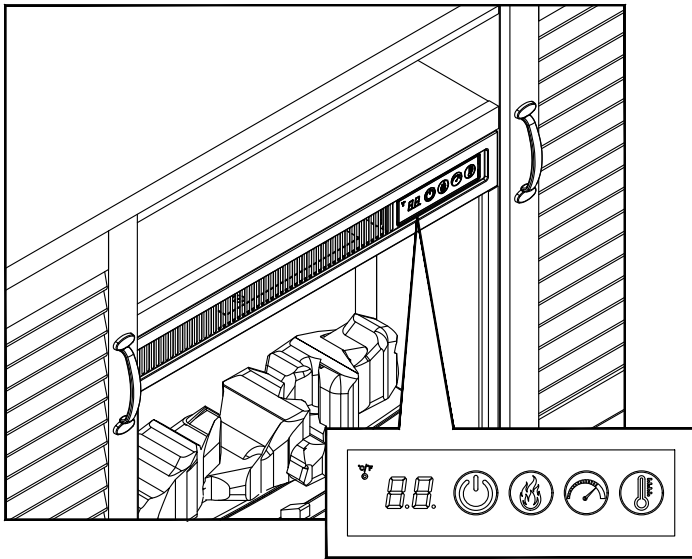
To remove the Fireplace, the following are the steps.

- Raise the Middle Shelf (H) a bit. Then tilt the Fireplace towards the front so that the Spring Guide is out of the hole.
- Pull the Fireplace out.
- Return the Middle Shelf to original position.

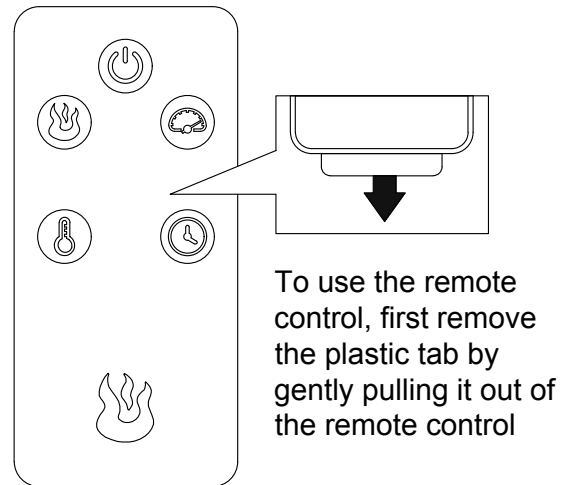


# OPERATING INSTRUCTIONS

Control Panel



Remote Control



To use the remote control, first remove the plastic tab by gently pulling it out of the remote control

## CONTROL AND DISPLAY

The control panel will display the heater setting when the unit power is turned ON. Whichever control icon you press will display the current setting of the corresponding function. Press the control icon again to adjust the setting. Following adjustment of any setting(s), the unit will resume to display the heater setting after 5 seconds.



### POWER FUNCTION

- Press the POWER ICON to cycle the unit between HEATER ON, HEATER OFF and UNIT OFF.
- When the unit is in HEATER ON mode, the control panel will display the heater setting indicating the unit has power. Under HEATER ON mode, both the heater and grate display will be switched on.
- When the POWER ICON is pressed again, the unit will go into HEATER OFF mode. In this mode, the heater function will be turned off and only the grate display will be switched on.
- Pressing the POWER ICON for the third time, will turn the unit OFF.
- Functions stored in memory will resume at the last setting.
- When the unit is powered OFF, the fan will continue to blow for a 60 second cool-down cycle prior to shutting down (a countdown will be displayed).



### FLAME BRIGHTNESS FUNCTION

- Press the FLAME BRIGHTNESS ICON to display the current flame brightness setting.
- Press the FLAME BRIGHTNESS ICON again to scroll down through the flame brightness settings: 5, 4, 3, 2, 1, OF (OFF).



### FLAME SPEED FUNCTION

- Press the FLAME SPEED ICON to display the current flame speed setting.
- Press the FLAME SPEED ICON again to scroll down through the flame speed settings: 5, 4, 3, 2, 1.

## OPERATING INSTRUCTIONS (CONTINUED)



### HEATER FUNCTION

- Press the HEATER ICON to display the current heater setting.
- Press the HEATER ICON again to cycle through the heater settings.
- Set the heater to "HI" (High) to have the heater run continuously.
- Set the heater to "OF" (OFF) to use the flame functions without heat.
- This heater has a thermostat sensor to control the ambient temperature in the surrounding area of the fireplace. The heater will cycle ON and OFF to maintain the selected temperature. The thermostat setting range is 82°F (32°C) to 65°F (15°C).  
**Note:** This may not exactly match the room thermostat reading as their sensors are located in different areas.
- See **HEATER OVERRIDE** section to disengage the heater.

### Toggle between Fahrenheit and Celsius Function

- Use a pin to press the button to display the current display setting.
- Press the F/C button again to cycle between Fahrenheit and Celsius display.



### SLEEP TIMER FUNCTION (Remote Control only)

- The Sleep TIMER function will set a countdown to shut down the unit's main power.
- Press the TIMER ICON to display the current Sleep Timer setting.
- Press the TIMER ICON again to scroll through the timer settings, which are: 30 (minutes), 1H, 2H, 3H, 4H, 5H, 6H, 7H, 8H, 9H, OF (OFF).
- When the timer reaches zero, it will turn OFF the main power and will maintain all the settings in the memory.

### HEATER OVERRIDE

The power to the heater can be disengaged to prevent the heater from being accidentally or unintentionally powered on. This feature is primarily added to help prevent children from powering on the heater when it is not desired.

**Note:** The heater override can only be set from the control panel and will not work if using the remote control.

- First turn the main power OFF. Press the FLAME BRIGHTNESS ICON. As the display is flashing, press the FLAME BRIGHTNESS ICON again and long-hold for around 20 seconds. The E3 symbol will display to indicate that the heater is now disengaged.
- **Note:** The Flame and Timer functions will operate normally. Only the heater is disengaged.
- Repeat the same process to re-engage the heater function. The E3 symbol will change back to display the heater setting when the heater is re-engaged.

### THERMOSTAT CALIBRATE FUNCTION

The thermostat value can be calibrated between +9 and -9 °F/°C

- First press the FLAME BRIGHTNESS ICON. As the display start flashing, press the FLAME BRIGHTNESS ICON again and long-hold for around 30 seconds. "--" will be displayed. Now press the FLAME SPEED ICON to adjust the thermostat value higher or HEATER ICON to adjust the thermostat value lower. Once done press either the POWER ICON or FLAME BRIGHTNESS ICON to exit.

### MEMORY FUNCTION

This unit has a memory function that allows you to turn off the MAIN POWER and retains all the other function settings (excluding the SLEEP TIMER function).

## ONE-YEAR LIMITED WARRANTY

The manufacturer warrants that your new Electric Fireplace is free from manufacturing and material defects for a period of one year from date of purchase, subject to the following conditions and limitations.

Install and operate this Electric Fireplace in accordance with the installation and operating instructions furnished with the product at all times. Any unauthorized repair, alteration, willful abuse, accident, or misuse of the product shall nullify this warranty.

This warranty is non-transferable, and is made to the original owner, provided that the purchase was made through an authorized supplier of the product.

The warranty is limited to the repair or replacement of part(s) found to be defective in material or workmanship, provided that such part(s) have been subjected to normal conditions of use and service, after said defect is confirmed by the manufacturer's inspection.

The manufacturer may, at its discretion, fully discharge all obligations with respect to this warranty by refunding the wholesale price of the defective part(s).

Any installation, labor, construction, transportation, or other related costs/expenses arising from defective part(s), repair, replacement, or otherwise of same, will not be covered by this warranty, nor shall the manufacturer assume responsibility for same.

The owner/user assumes all other risks, if any, including the risk of any direct, indirect or consequential loss or damage arising out of the use, or inability to use the product, except as provided by law.

All other warranties - expressed or implied - with respect to the product, its components and accessories, or any obligations/liabilities on the part of the manufacturer are hereby expressly excluded.

The manufacturer neither assumes, nor authorizes any third party to assume on its behalf, any other liabilities with respect to the sale of the product.

The warranties as outlined within this document do not apply to non accessories used in conjunction with the installation of this product.

This warranty is void if:

1. The fireplace is subjected to prolonged periods of dampness or condensation.
2. Any unauthorized alteration, willful abuse, accident, or misuse of the product.
3. You do not have the original receipt of purchase.