

## ASSEMBLY INSTRUCTION

ITEM#: IC 1001

SKU#810530649

---

# BOBBINA COFFEE TABLE

---

---

---

## GENERAL BEST PRACTICES FOR ASSEMBLY:

---

---

Read all instructions before starting.

Clear an area for assembly and assemble on a soft surface such as cardboard or carpet to protect finish.

---

---

## WARNINGS:

---

---

Caution: Adult assembly required. Assembly will require 2 people. Assemble on soft surfaces to prevent damage to the product finish.

DO NOT use power tools.

---

---

## MAINTENANCE:

---

---

Check bolts/screws periodically and tighten if necessary.

WARNING: Should this product become damaged, and/or components are broken or missing, DO NOT USE.

---

---

## HELPFUL HINTS

---

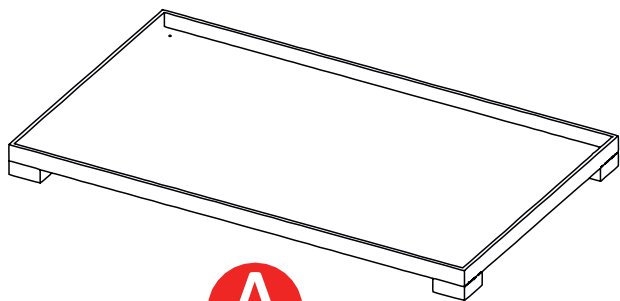
---

DO NOT place your furniture too close to window, heaters, or vents.

DO NOT SMOKE WHEN DROWSY. Immediately remove any glowing or lit cigarette which falls on furniture.

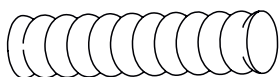
Clean any spills immediately using a clean, slightly dampened cloth and dabbing the area until the spill is removed.

## PARTS LIST



**A**

Top x1pc



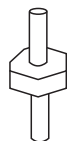
**C**

Legs x4 pc



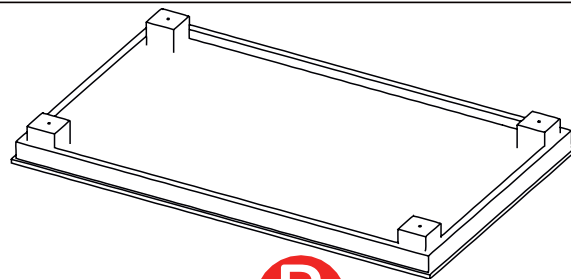
**E**

Spanner x1pc



**G**

Nut bolt x4pc



**B**

Base x1 pc



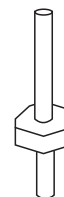
**D**

Nut x4pc



**F**

Washer x4pc



**H**

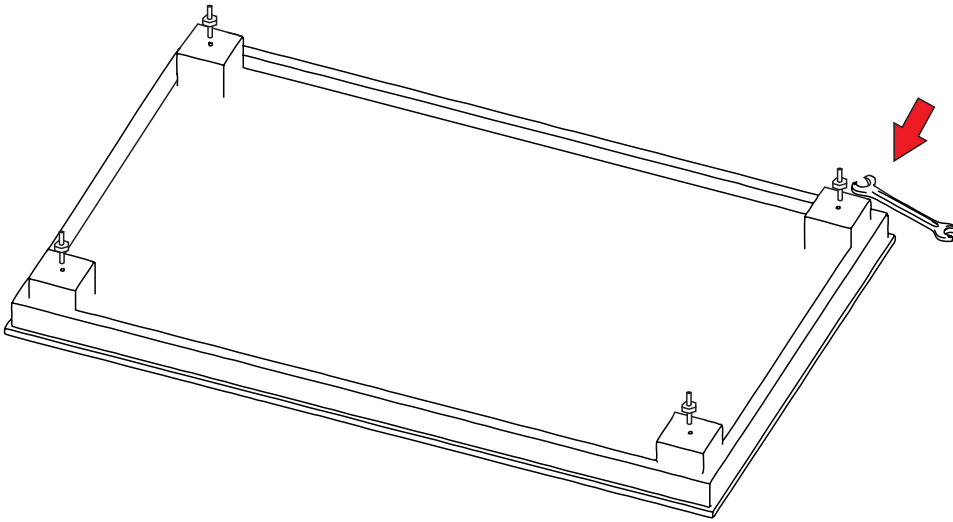
Nut bolt x4pc

---

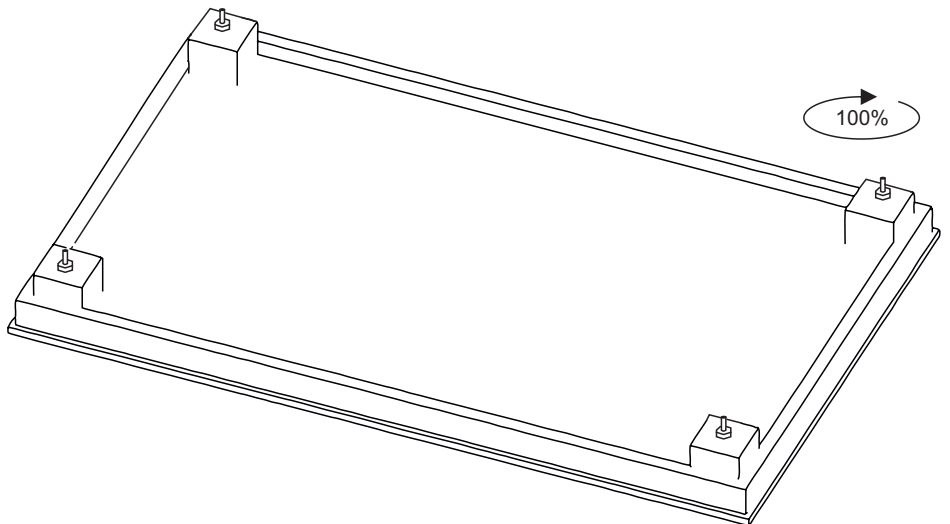
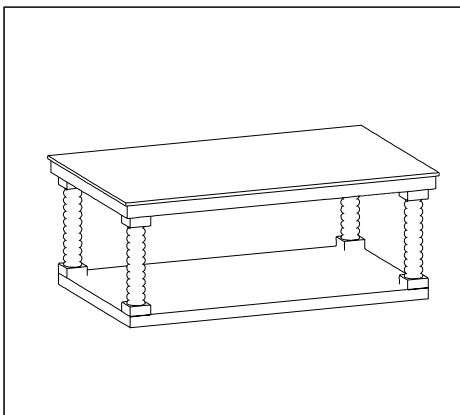
## STEP 1

---

1.Align the holes in the end of Legs (C) with the Nut Bolts (G) in Top (A).  
Turn the legs (C) in a clockwise direction until fully tightened.



Assembled View:

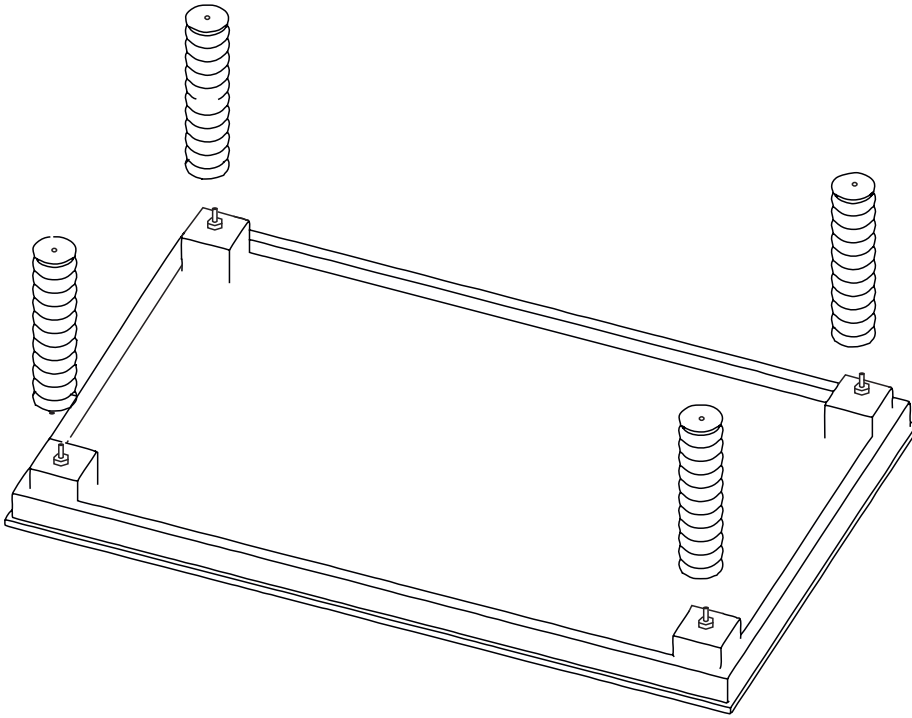


---

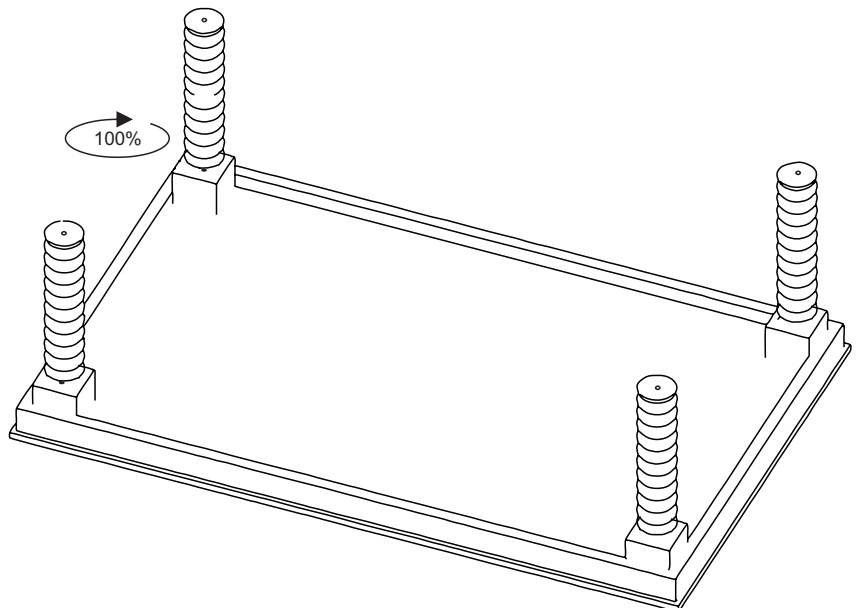
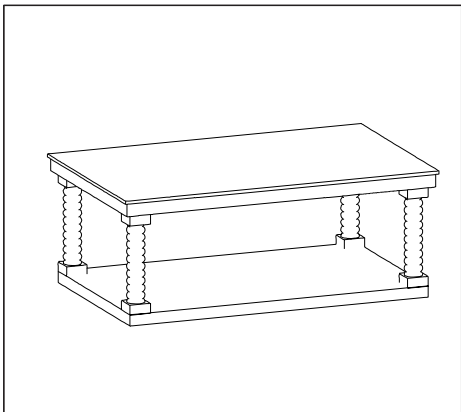
## STEP 2

---

1. Align the holes in the end of Legs (C) with the Nut Bolts (G) in Top (A).  
Turn the legs (C) in a clockwise direction until fully tightened



Assembled View:

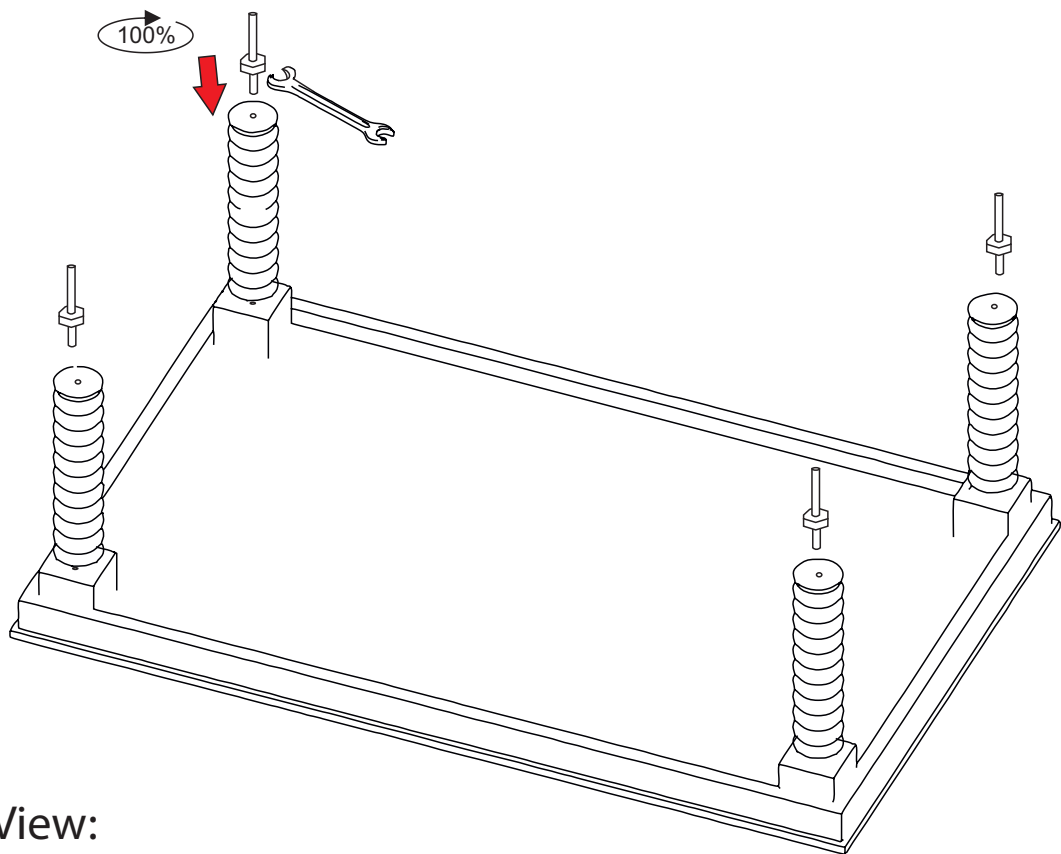


---

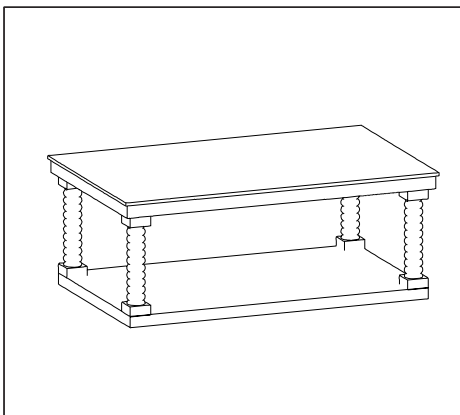
## STEP 3

---

1.Tighten Smaller Side Nut Bolt (H)Legs(C)clock wise 100%By help of Spanner(G).



Assembled View:

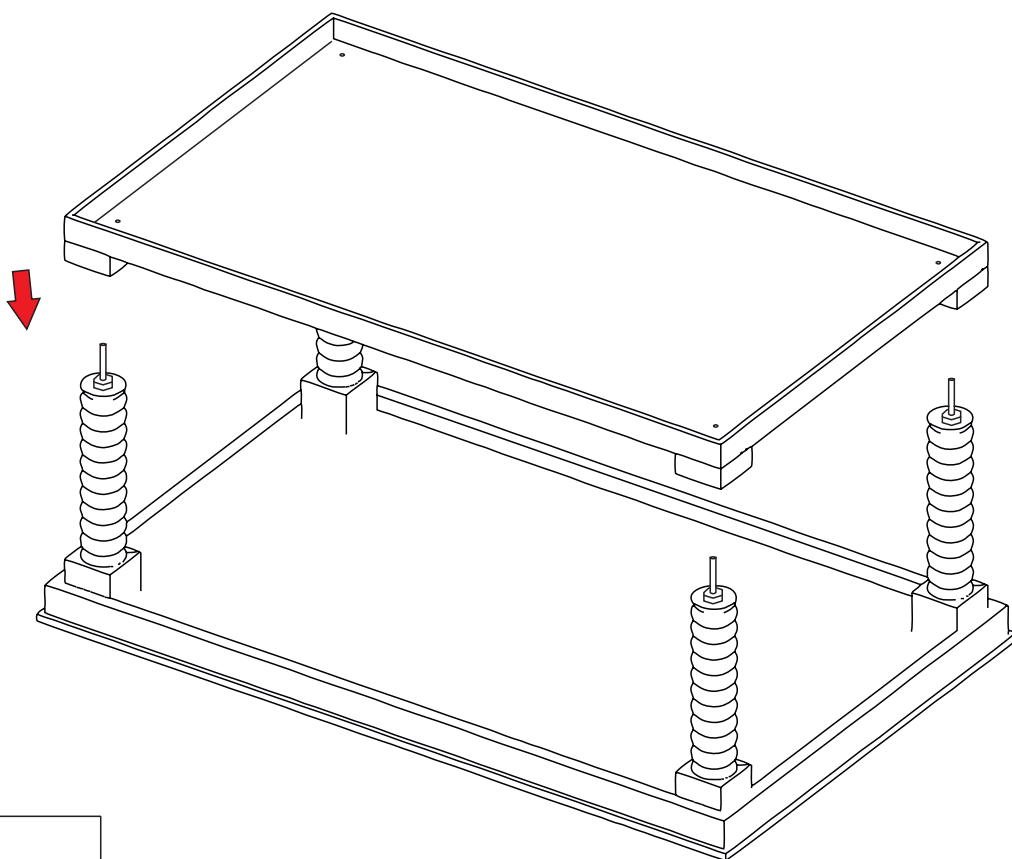


---

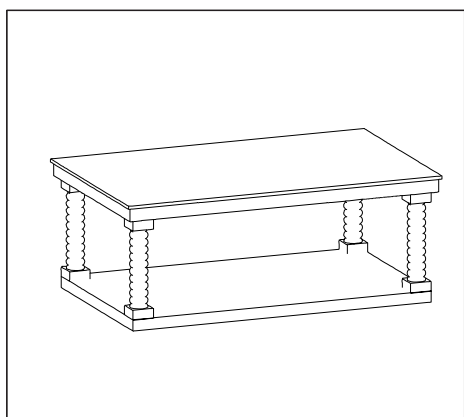
## STEP 4

---

1.Align the holes in Base (B) with the Nut Bolts in Legs (C) and lower into place.



Assembled View:



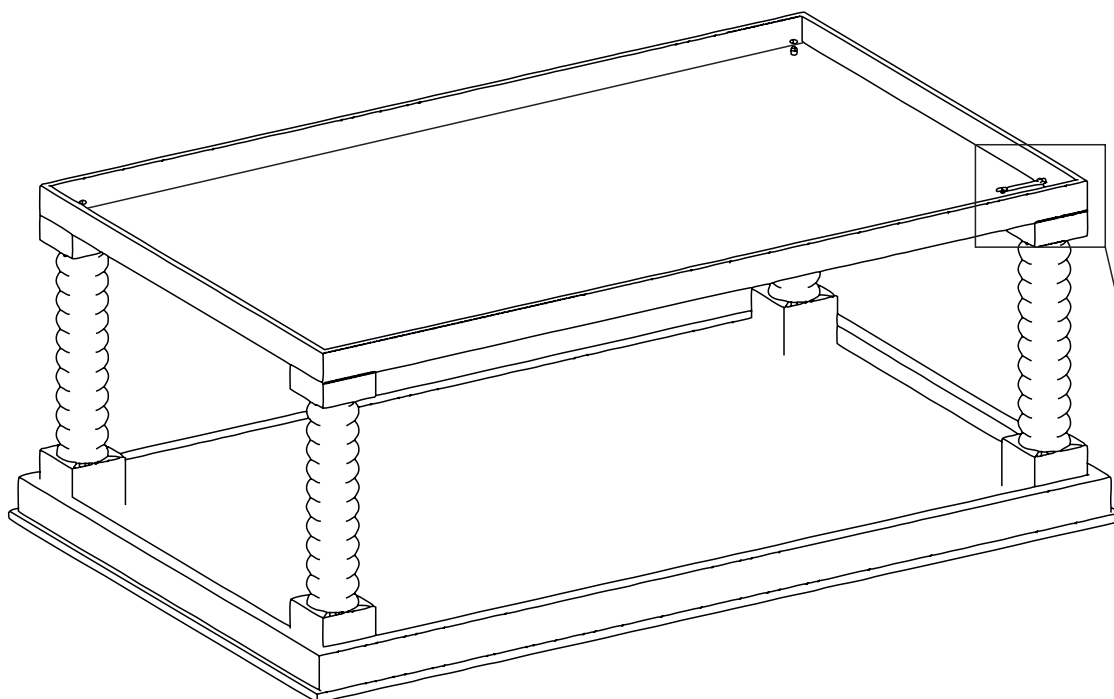


---

## STEP 5

---

1. Secure the base in place with Washer (F) and Nut (D) using Spanner (E). Fully tighten Nuts (D). Place the table in the upright position. Assembly is now complete.



Assembled View:

