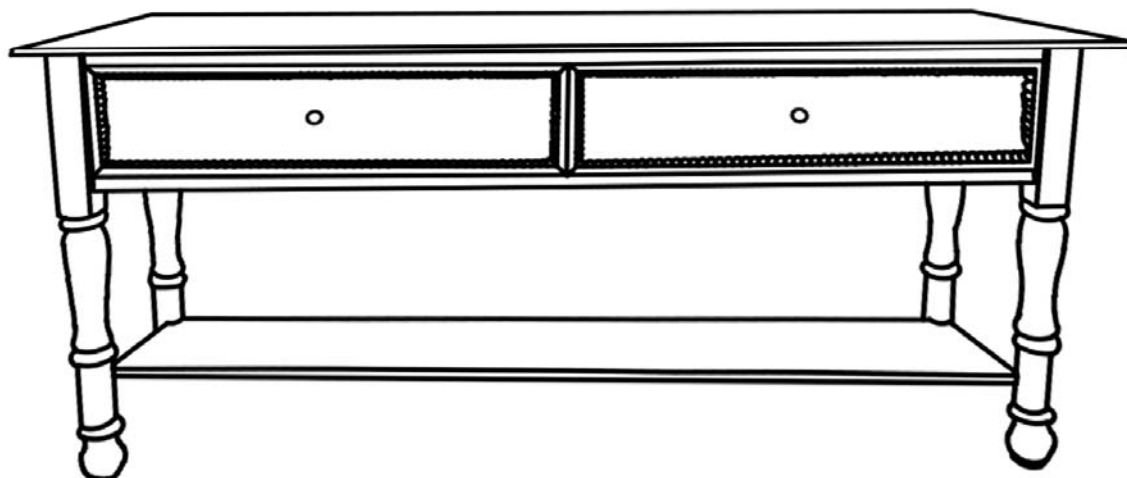


LUSSO MARBLE CONSOLE TABLE



ASSEMBLY INSTRUCTION

Sku No. 810511008

Need help? We are here for you!


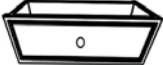




Write us on:
info@attic-products.com

ASSEMBLY INSTRUCTIONS

ATTENTION: THIS PRODUCT IS NOT FOR COMMERCIAL USE
INTENDED FOR RESIDENTIAL USE ONLY.

Sku No. 810511008

PARTS LIST

PART NO.	MATERIAL CODE	PART	Q'TY	PART NO.	MATERIAL CODE	PART	Q'TY
1	AP-200613-A	 TABLE TOP	1	4	AP-200613-D		2
2	AP-200613-B	 LEG	2	5	AP-200613-E	 Allen Bolt Small	4
3	AP-200613-C	 Shelf	1	6	AP-200613-F	 Allen Bolt Large	6

Tool



FIGURE 1

PARTS REQUIRED: 1, 2, 4 & 6

Keep both the drawers out of frame
Align legs with Wooden body and tight them with Allen bolt and Allen key.

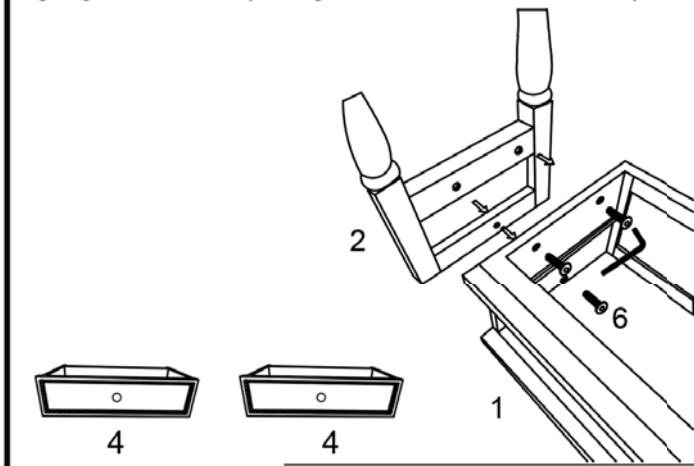
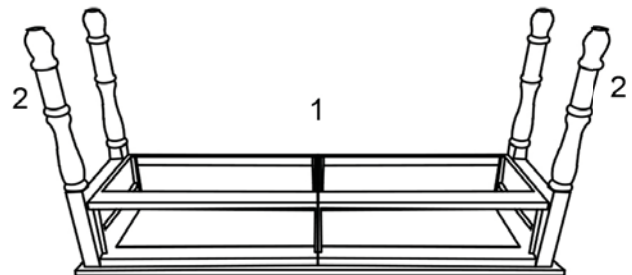


FIGURE 2

PARTS REQUIRED: 2, 2 & 1

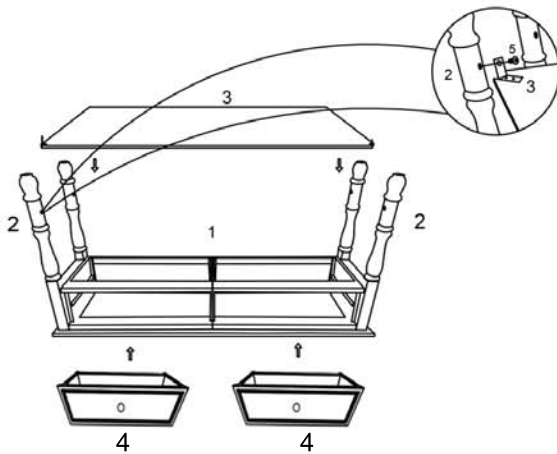
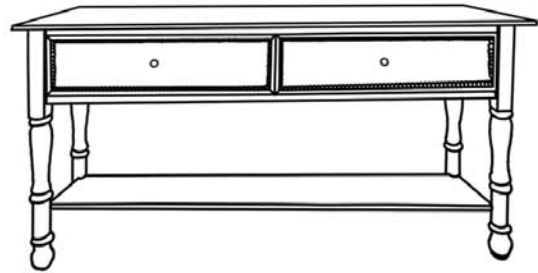
Repeat the process of step one for other legs



- ⚠ Use the correct bolts as indicated. Do not tighten any of the bolts until the table is completely assembled.
- ⚠ Do not sit or stand on this table.
- ⚠ Do not discard any of the packaging until you have checked that you have all of the parts and fittings required.
- ⚠ Keep children away during assembly. This item contains small parts that can be swallowed by children. Children should always be under direct adult supervision while using this product.
- ⚠ Retain these assembly instructions for future reference.
- ⚠ Quote the following sku No. 810511008 when contacting us.

FIGURE 3**PARTS REQUIRED: 1, 2, 3, 4 & 5**

Align wooden shelf with legs and tight it with Allen bolt and Allen key. After that put the drawer inside the frame

**FIGURE 4****Cleaning and Maintenance**

- Gently wipe with a soft damp cloth and dry completely.
- Inspect and tighten all bolts and fasteners on a regular basis to ensure the proper performance and safety of your table.
- In order to prolong the life and beauty of your table, we recommend that it be stored in a dry and protected area during off season periods.

STOP!

**Missing A Part?
No Need To Go Back To
The Store**

The store where you made your purchase does not stock parts for this item.

If you need parts, whether they are missing or damaged, please write us at
info@attic-products.com

READ THESE INSTRUCTIONS COMPLETELY BEFORE STARTING ASSEMBLY

- ★ SEPARATE AND IDENTIFY ALL OF THE PARTS, MAKING SURE THAT YOU HAVE ALL OF THE PARTS LISTED.
- ★ IF YOU DO NOT LOCATE ALL OF THE PARTS LISTED, INSPECT THE PACKING MATERIAL FOR SMALL PARTS THAT MAY HAVE BECOME SEPARATED DURING SHIPMENT.
- ★ IF YOU EXPERIENCE ANY DIFFICULTY DURING ASSEMBLY OR IF ANY PARTS ARE MISSING OR DAMAGED, WRITE US AT :INFO@ATTIC-PRODUCTS.COM
- ★ PROVIDE THE FOLLOWING INFORMATION WHEN CALLING:
1-MODEL NUMBER OF THE PRODUCT.
2-PART NUMBER AND MATERIAL CODE OF THE PART FROM THE PARTS LIST.
- ★ MOST PROBLEMS CAN BE RESOLVED WITHOUT RETURNING THIS PRODUCT TO THE RETAILER.

⚠ CAUTION:

Do not sit or stand on table. Misuse of table may result in damage or injury. Not intended for commercial use.